

## Product datasheet for **TA811314S**

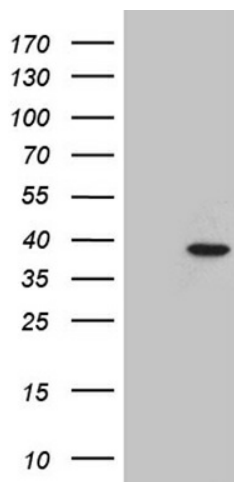
### **RHNO1 Mouse Monoclonal Antibody [Clone ID: OTI2C12]**

#### **Product data:**

<b>Product Type:</b>	Primary Antibodies
<b>Clone Name:</b>	OTI2C12
<b>Applications:</b>	WB
<b>Recommended Dilution:</b>	WB 1:500
<b>Reactivity:</b>	Human
<b>Host:</b>	Mouse
<b>Isotype:</b>	IgG1
<b>Clonality:</b>	Monoclonal
<b>Immunogen:</b>	Full length human recombinant protein of human C12ORF32 (NP_113653) produced in E.coli.
<b>Formulation:</b>	PBS (pH 7.3) containing 1% BSA, 50% glycerol and 0.02% sodium azide.
<b>Concentration:</b>	1 mg/ml
<b>Purification:</b>	Purified from mouse ascites fluids or tissue culture supernatant by affinity chromatography (protein A/G)
<b>Conjugation:</b>	Unconjugated
<b>Storage:</b>	Store at -20°C as received.
<b>Stability:</b>	Stable for 12 months from date of receipt.
<b>Predicted Protein Size:</b>	26.5 kDa
<b>Gene Name:</b>	RAD9-HUS1-RAD1 interacting nuclear orphan 1
<b>Database Link:</b>	<a href="#">NP_113653</a> <a href="#">Entrez Gene 83695 Human</a> <a href="#">Q9BSD3</a>
<b>Synonyms:</b>	chromosome 12 open reading frame 32; HKMT1188; HKMT1188, MGC13204; MGC13204



[View online »](#)

**Product images:**

HEK293T cells were transfected with the pCMV6-ENTRY control (Cat# [PS100001], Left lane) or pCMV6-ENTRY C12orf32 (Cat# [RC203020], Right lane) cDNA for 48 hrs and lysed. Equivalent amounts of cell lysates (5 ug per lane) were separated by SDS-PAGE and immunoblotted with anti-C12orf32 (Cat# [TA811314])(1:500). Positive lysates [LY410499] (100ug) and [LC410499] (20ug) can be purchased separately from OriGene.