

## Product datasheet for **TA811314AM**

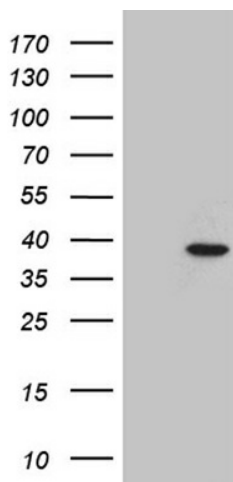
### **RHNO1 Mouse Monoclonal Antibody (Biotin conjugated) [Clone ID: OTI2C12]**

#### **Product data:**

|                         |   |
|-------------------------|---|
| Product Type:           | Primary Antibodies  |
| Clone Name:             | OTI2C12   |
| Applications:           | WB  |
| Recommended Dilution:   | WB 1:500  |
| Reactivity:             | Human   |
| Host:                   | Mouse   |
| Isotype:                | IgG1  |
| Clonality:              | Monoclonal  |
| Immunogen:              | Full length human recombinant protein of human C12ORF32 (NP_113653) produced in E.coli.                   |
| Formulation:            | PBS (pH 7.3) containing 1% BSA, 50% glycerol and 0.02% sodium azide.                                      |
| Concentration:          | 0.5 mg/ml   |
| Purification:           | Purified from mouse ascites fluids or tissue culture supernatant by affinity chromatography (protein A/G) |
| Conjugation:            | Biotin  |
| Storage:                | Store at -20°C as received.   |
| Stability:              | Stable for 12 months from date of receipt.  |
| Predicted Protein Size: | 26.5 kDa  |
| Gene Name:              | RAD9-HUS1-RAD1 interacting nuclear orphan 1   |
| Database Link:          | <a href="#">NP_113653</a><br><a href="#">Entrez Gene 83695 Human</a><br><a href="#">Q9BSD3</a>            |
| Synonyms:               | chromosome 12 open reading frame 32; HKMT1188; HKMT1188, MGC13204; MGC13204                               |



[View online »](#)

**Product images:**

HEK293T cells were transfected with the pCMV6-ENTRY control (Cat# [PS100001], Left lane) or pCMV6-ENTRY C12orf32 (Cat# [RC203020], Right lane) cDNA for 48 hrs and lysed. Equivalent amounts of cell lysates (5 ug per lane) were separated by SDS-PAGE and immunoblotted with anti-C12orf32 (Cat# [TA811314])(1:500). Positive lysates [LY410499] (100ug) and [LC410499] (20ug) can be purchased separately from OriGene.