

Product datasheet for **TA811307S**

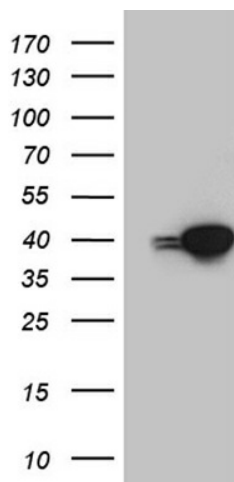
NSL1 Mouse Monoclonal Antibody [Clone ID: OTI4D3]

Product data:

Product Type:	Primary Antibodies
Clone Name:	OTI4D3
Applications:	WB
Recommended Dilution:	WB 1:2000
Reactivity:	Human
Host:	Mouse
Isotype:	IgG1
Clonality:	Monoclonal
Immunogen:	Full length human recombinant protein of human NSL1 (NP_056286) produced in E.coli.
Formulation:	PBS (pH 7.3) containing 1% BSA, 50% glycerol and 0.02% sodium azide.
Concentration:	1 mg/ml
Purification:	Purified from mouse ascites fluids or tissue culture supernatant by affinity chromatography (protein A/G)
Conjugation:	Unconjugated
Storage:	Store at -20°C as received.
Stability:	Stable for 12 months from date of receipt.
Predicted Protein Size:	32 kDa
Gene Name:	NSL1, MIS12 kinetochore complex component
Database Link:	NP_056286 Entrez Gene 25936 Human Q96IY1
Synonyms:	C1orf48; DC8; MIS14



[View online »](#)

Product images:

HEK293T cells were transfected with the pCMV6-ENTRY control (Left lane) or pCMV6-ENTRY NSL1 ([RC202811], Right lane) cDNA for 48 hrs and lysed. Equivalent amounts of cell lysates (5 ug per lane) were separated by SDS-PAGE and immunoblotted with anti-NSL1 (1:2000). Positive lysates [LY414523] (100ug) and [LC414523] (20ug) can be purchased separately from OriGene.