

## Product datasheet for **TA811305AM**

### **C9orf89 (CARD19) Mouse Monoclonal Antibody (Biotin conjugated) [Clone ID: OTI3B3]**

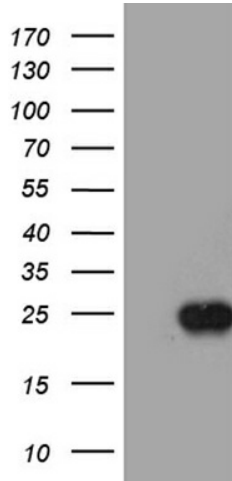
#### **Product data:**

Product Type:	Primary Antibodies
Clone Name:	OTI3B3
Applications:	WB
Recommended Dilution:	WB 1:500
Reactivity:	Human
Host:	Mouse
Isotype:	IgG1
Clonality:	Monoclonal
Immunogen:	Full length human recombinant protein of human C9ORF89 (NP_115686) produced in E.coli.
Formulation:	PBS (pH 7.3) containing 1% BSA, 50% glycerol and 0.02% sodium azide.
Concentration:	0.5 mg/ml
Purification:	Purified from mouse ascites fluids or tissue culture supernatant by affinity chromatography (protein A/G)
Conjugation:	Biotin
Storage:	Store at -20°C as received.
Stability:	Stable for 12 months from date of receipt.
Predicted Protein Size:	20.4 kDa
Gene Name:	caspase recruitment domain family member 19
Database Link:	<a href="#">NP_115686</a> <a href="#">Entrez Gene 84270 Human</a> <a href="#">Q96LW7</a>
Synonyms:	BinCARD; C9orf89
Protein Families:	Transmembrane



[View online »](#)

**Product images:**



HEK293T cells were transfected with the pCMV6-ENTRY control (Left lane) or pCMV6-ENTRY C9orf89 ([RC202608], Right lane) cDNA for 48 hrs and lysed. Equivalent amounts of cell lysates (5 ug per lane) were separated by SDS-PAGE and immunoblotted with anti-C9orf89 (1:500). Positive lysates [LY410210] (100ug) and [LC410210] (20ug) can be purchased separately from OriGene.