

Product datasheet for **TA811301S**

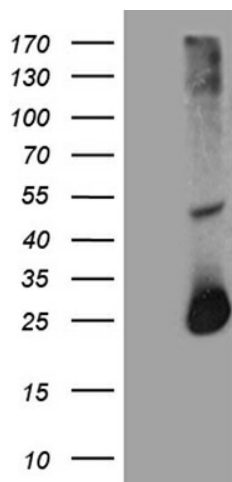
RGS17 Mouse Monoclonal Antibody [Clone ID: OTI8G4]

Product data:

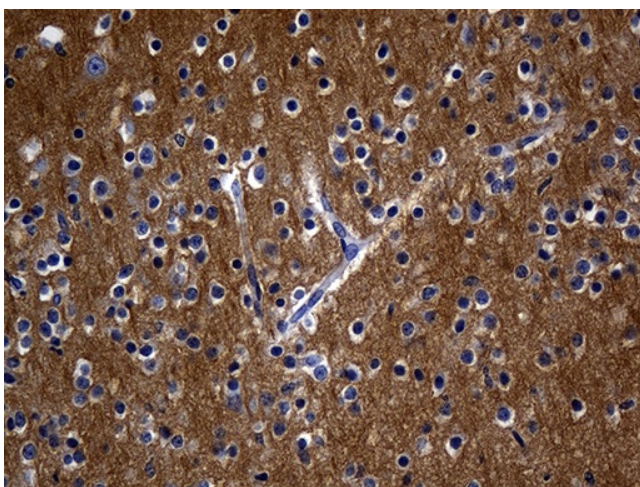
Product Type:	Primary Antibodies
Clone Name:	OTI8G4
Applications:	IHC, WB
Recommended Dilution:	WB 1:2000, IHC 1:500
Reactivity:	Human, Mouse, Rat
Host:	Mouse
Isotype:	IgG1
Clonality:	Monoclonal
Immunogen:	Full length human recombinant protein of human RGS17 (NP_036551) produced in E.coli.
Formulation:	PBS (pH 7.3) containing 1% BSA, 50% glycerol and 0.02% sodium azide.
Concentration:	1 mg/ml
Purification:	Purified from mouse ascites fluids or tissue culture supernatant by affinity chromatography (protein A/G)
Conjugation:	Unconjugated
Storage:	Store at -20°C as received.
Stability:	Stable for 12 months from date of receipt.
Predicted Protein Size:	24.2 kDa
Gene Name:	regulator of G-protein signaling 17
Database Link:	NP_036551 Entrez Gene 26575 Human Q9UGC6
Synonyms:	hRGS17; RGS-17; RGSZ2
Protein Families:	Druggable Genome



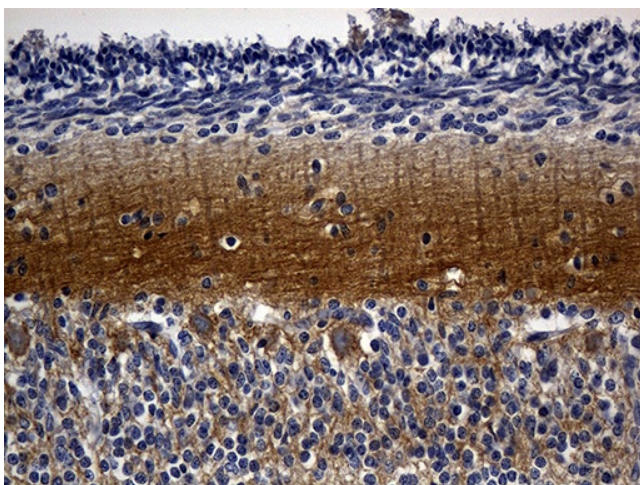
[View online »](#)

Product images:

HEK293T cells were transfected with the pCMV6-ENTRY control (Cat# [PS100001], Left lane) or pCMV6-ENTRY RGS17 (Cat# [RC201859], Right lane) cDNA for 48 hrs and lysed. Equivalent amounts of cell lysates (5 ug per lane) were separated by SDS-PAGE and immunoblotted with anti-RGS17 (Cat# [TA811301])(1:2000). Positive lysates [LY402209] (100ug) and [LC402209] (20ug) can be purchased separately from OriGene.



Immunohistochemical staining of paraffin-embedded Human adult brain tissue within the normal limits using anti-RGS17 mouse monoclonal antibody. (Heat-induced epitope retrieval by 1mM EDTA in 10mM Tris buffer (pH8.5) at 120°C for 3min, [TA811301]) (1:500)



Immunohistochemical staining of paraffin-embedded Human embryonic cerebellum within the normal limits using anti-RGS17 mouse monoclonal antibody. (Heat-induced epitope retrieval by 1mM EDTA in 10mM Tris buffer (pH8.5) at 120°C for 3min, [TA811301]) (1:500)