

Product datasheet for **TA811300AM**

PYGM Mouse Monoclonal Antibody (Biotin conjugated) [Clone ID: OTI5D1]

Product data:

Product Type:	Primary Antibodies
Clone Name:	OTI5D1
Applications:	IHC, WB
Recommended Dilution:	WB 1:500~2000, IHC 1:2000
Reactivity:	Human, Rat, Mouse
Host:	Mouse
Isotype:	IgG1
Clonality:	Monoclonal
Immunogen:	Human recombinant protein fragment corresponding to amino acids 698-842 of human PYGM (NP_005600) produced in E.coli.
Formulation:	PBS (pH 7.3) containing 1% BSA, 50% glycerol and 0.02% sodium azide.
Concentration:	0.5 mg/ml
Purification:	Purified from mouse ascites fluids or tissue culture supernatant by affinity chromatography (protein A/G)
Conjugation:	Biotin
Storage:	Store at -20°C as received.
Stability:	Stable for 12 months from date of receipt.
Gene Name:	phosphorylase, glycogen, muscle
Database Link:	NP_005600 Entrez Gene 19309 Mouse Entrez Gene 24701 Rat Entrez Gene 5837 Human P11217
Background:	This gene encodes a muscle enzyme involved in glycogenolysis. Highly similar enzymes encoded by different genes are found in liver and brain. Mutations in this gene are associated with McArdle disease (myophosphorylase deficiency), a glycogen storage disease of muscle. Alternative splicing results in multiple transcript variants. [provided by RefSeq, Sep 2009]
Synonyms:	glycogen; glycogen phosphorylase; glycogen storage disease type V; glycogen storage disease type V); McArdle syndrome; muscle; muscle (McArdle syndrome; myophosphorylase; phosphorylase

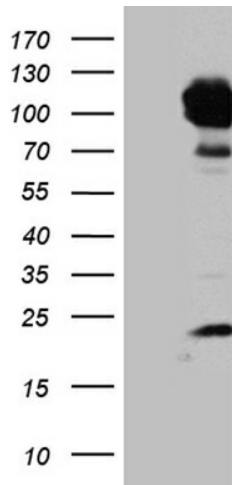


[View online »](#)

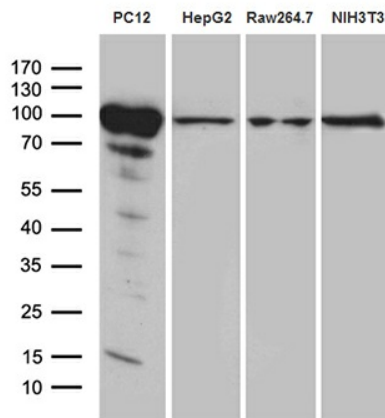
Protein Families: Druggable Genome

Protein Pathways: Insulin signaling pathway, Starch and sucrose metabolism

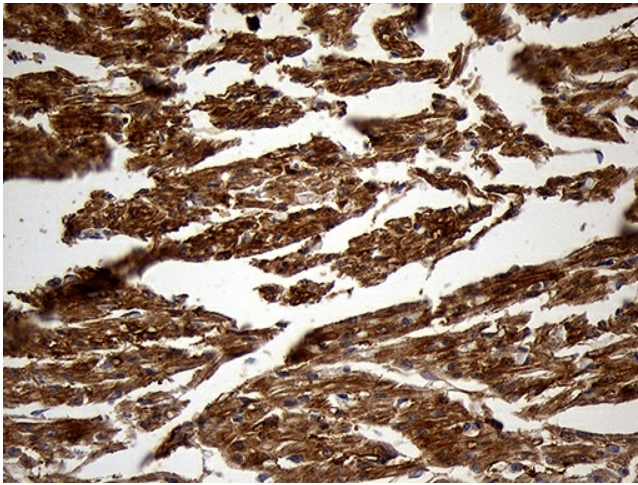
Product images:



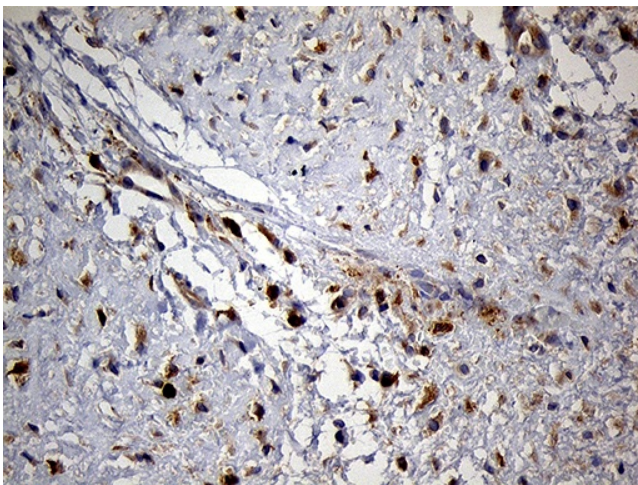
HEK293T cells were transfected with the pCMV6-ENTRY control (Cat# [PS100001], Left lane) or pCMV6-ENTRY PYGM (Cat# [RC212365], Right lane) cDNA for 48 hrs and lysed. Equivalent amounts of cell lysates (5 ug per lane) were separated by SDS-PAGE and immunoblotted with anti-PYGM (Cat# [TA811300])(1:2000). Positive lysates [LY401719] (100ug) and [LC401719] (20ug) can be purchased separately from OriGene.



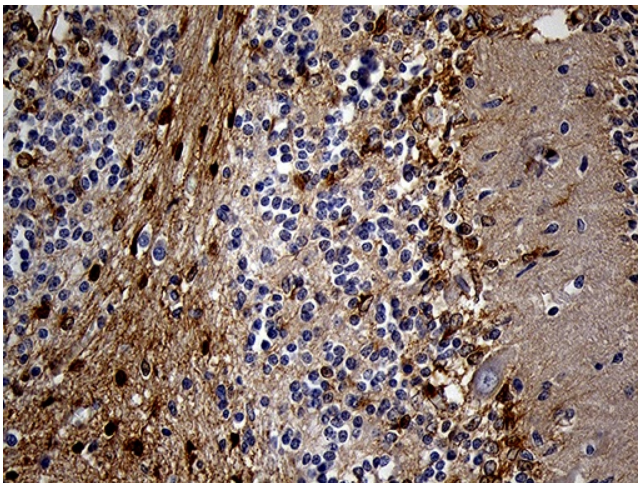
Western blot analysis of extracts (35ug) from 4 different cell lines by using anti-PYGM monoclonal antibody (1:500).



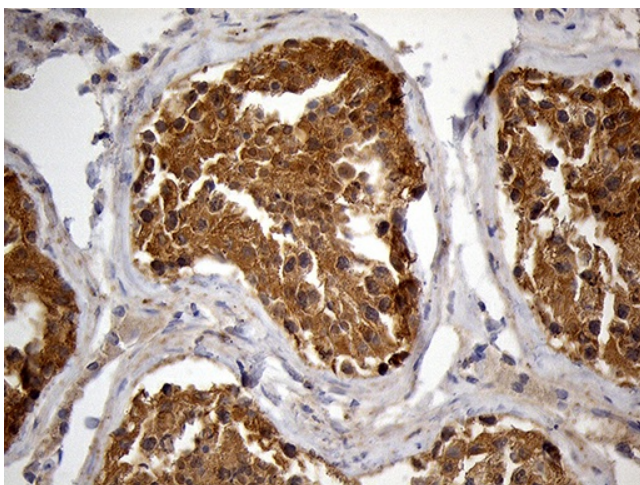
Immunohistochemical staining of paraffin-embedded Human adult heart tissue within the normal limits using anti-PYGM mouse monoclonal antibody. (Heat-induced epitope retrieval by 1mM EDTA in 10mM Tris buffer (pH8.5) at 120°C for 3min, [TA811300]) (1:2000)



Immunohistochemical staining of paraffin-embedded Human muscle tissue within the normal limits using anti-PYGM mouse monoclonal antibody. (Heat-induced epitope retrieval by 1mM EDTA in 10mM Tris buffer (pH8.5) at 120°C for 3min, [TA811300]) (1:2000)



Immunohistochemical staining of paraffin-embedded Human embryonic cerebellum within the normal limits using anti-PYGM mouse monoclonal antibody. (Heat-induced epitope retrieval by 1mM EDTA in 10mM Tris buffer (pH8.5) at 120°C for 3min, [TA811300]) (1:2000)



Immunohistochemical staining of paraffin-embedded Human testicle tissue within the normal limits using anti-PYGM mouse monoclonal antibody. (Heat-induced epitope retrieval by 1mM EDTA in 10mM Tris buffer (pH8.5) at 120°C for 3min, [TA811300]) (1:2000)