

## Product datasheet for TA811295

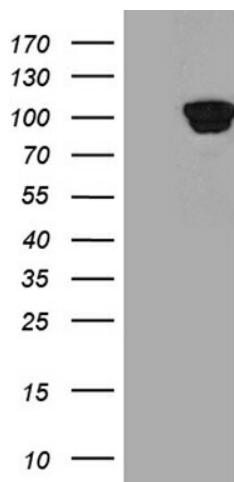
### PYGM Mouse Monoclonal Antibody [Clone ID: OTI3C11]

#### Product data:

Product Type:	Primary Antibodies
Clone Name:	OTI3C11
Applications:	WB
Recommended Dilution:	WB 1:2000
Reactivity:	Human, Mouse, Rat
Host:	Mouse
Isotype:	IgG1
Clonality:	Monoclonal
Immunogen:	Human recombinant protein fragment corresponding to amino acids 698-842 of human PYGM (NP_005600) produced in E.coli.
Formulation:	PBS (pH 7.3) containing 1% BSA, 50% glycerol and 0.02% sodium azide.
Concentration:	1 mg/ml
Purification:	Purified from mouse ascites fluids or tissue culture supernatant by affinity chromatography (protein A/G)
Conjugation:	Unconjugated
Storage:	Store at -20°C as received.
Stability:	Stable for 12 months from date of receipt.
Predicted Protein Size:	96.9 kDa
Gene Name:	phosphorylase, glycogen, muscle
Database Link:	<a href="#">NP_005600</a> <a href="#">Entrez Gene 19309 Mouse</a> <a href="#">Entrez Gene 24701 Rat</a> <a href="#">Entrez Gene 5837 Human</a> <a href="#">P11217</a>
Synonyms:	glycogen; glycogen phosphorylase; glycogen storage disease type V; glycogen storage disease type V); McArdle syndrome; muscle; muscle (McArdle syndrome; myophosphorylase; phosphorylase
Protein Families:	Druggable Genome
Protein Pathways:	Insulin signaling pathway, Starch and sucrose metabolism



[View online »](#)

**Product images:**

HEK293T cells were transfected with the pCMV6-ENTRY control (Left lane) or pCMV6-ENTRY PYGM ([RC212365], Right lane) cDNA for 48 hrs and lysed. Equivalent amounts of cell lysates (5 ug per lane) were separated by SDS-PAGE and immunoblotted with anti-PYGM (1:2000). Positive lysates [LY401719] (100ug) and [LC401719] (20ug) can be purchased separately from OriGene.