

## Product datasheet for **TA811289AM**

### CD14 Mouse Monoclonal Antibody (Biotin conjugated) [Clone ID: OTI10C2]

#### Product data:

Product Type:	Primary Antibodies
Clone Name:	OTI10C2
Applications:	IHC
Recommended Dilution:	IHC 1:1000
Reactivity:	Human
Host:	Mouse
Isotype:	IgG1
Clonality:	Monoclonal
Immunogen:	Human recombinant protein fragment corresponding to amino acids 20-87 of human CD14 (NP_000582) produced in E.coli.
Formulation:	PBS (pH 7.3) containing 1% BSA, 50% glycerol and 0.02% sodium azide.
Concentration:	0.5 mg/ml
Purification:	Purified from mouse ascites fluids or tissue culture supernatant by affinity chromatography (protein A/G)
Conjugation:	Biotin
Storage:	Store at -20°C as received.
Stability:	Stable for 12 months from date of receipt.
Predicted Protein Size:	40.08 kDa
Gene Name:	CD14 molecule
Database Link:	<a href="#">NP_000582</a> <a href="#">Entrez Gene 929 Human</a> <a href="#">P08571</a>
Background:	The protein encoded by this gene is a surface antigen that is preferentially expressed on monocytes/macrophages. It cooperates with other proteins to mediate the innate immune response to bacterial lipopolysaccharide. Alternative splicing results in multiple transcript variants encoding the same protein. [provided by RefSeq, Mar 2010]
Synonyms:	CD14 antigen; CD14 molecule; monocyte differentiation antigen CD14

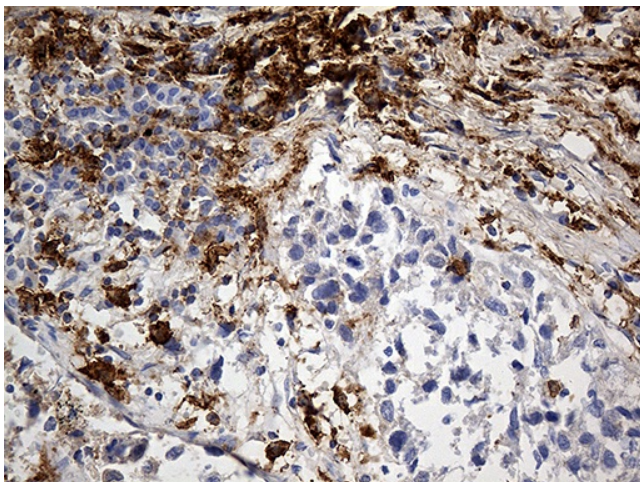


[View online »](#)

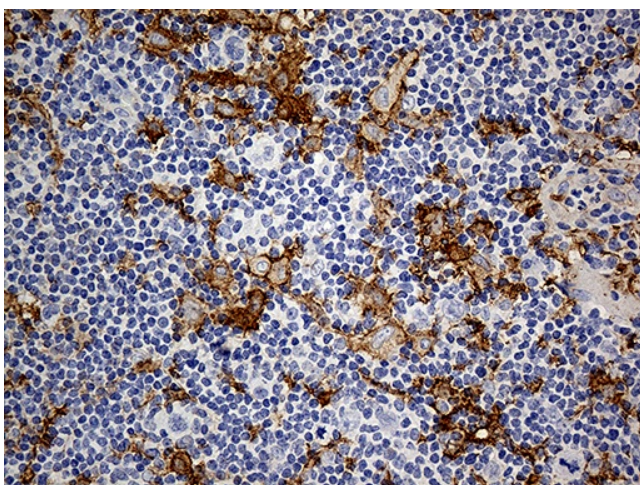
**Protein Families:** Adult stem cells, Druggable Genome, Embryonic stem cells, ES Cell Differentiation/IPS, Transmembrane

**Protein Pathways:** Hematopoietic cell lineage, MAPK signaling pathway, Pathogenic Escherichia coli infection, Regulation of actin cytoskeleton, Toll-like receptor signaling pathway

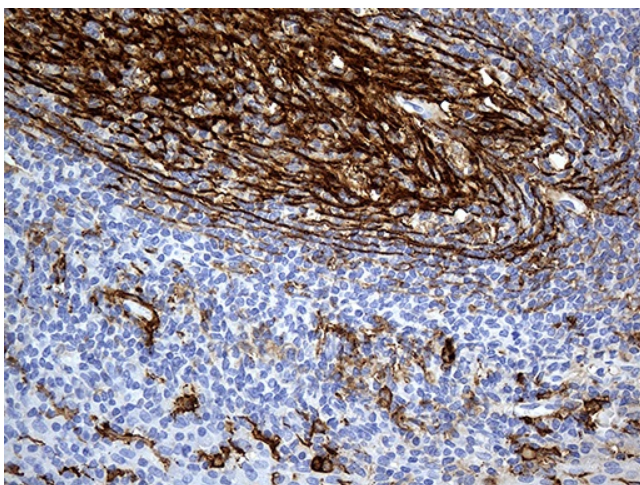
### Product images:



Immunohistochemical staining of paraffin-embedded Carcinoma of Human lung tissue using anti-CD14 mouse monoclonal antibody. (Heat-induced epitope retrieval by 1mM EDTA in 10mM Tris buffer (pH8.5) at 120°C for 3min, [TA811289]) (1:1000)



Immunohistochemical staining of paraffin-embedded Human lymphoma tissue using anti-CD14 mouse monoclonal antibody. (Heat-induced epitope retrieval by 1mM EDTA in 10mM Tris buffer (pH8.5) at 120°C for 3min, [TA811289]) (1:1000)



Immunohistochemical staining of paraffin-embedded Human tonsil within the normal limits using anti-CD14 mouse monoclonal antibody. (Heat-induced epitope retrieval by 1mM EDTA in 10mM Tris buffer (pH8.5) at 120°C for 3min, [TA811289]) (1:1000)