

Product datasheet for **TA811284BM**

N WASP (WASL) Mouse Monoclonal Antibody (HRP conjugated) [Clone ID: OTI9F2]

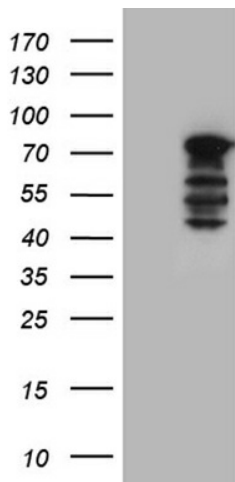
Product data:

| | |
|-------------------------|---|
| Product Type: | Primary Antibodies |
| Clone Name: | OTI9F2 |
| Applications: | WB |
| Recommended Dilution: | WB 1:500~2000 |
| Reactivity: | Human, Mouse |
| Host: | Mouse |
| Isotype: | IgG2b |
| Clonality: | Monoclonal |
| Immunogen: | Full length human recombinant protein of human WASL (NP_003932) produced in HEK293T cell. |
| Formulation: | PBS (pH 7.3) containing 1% BSA, 50% glycerol. |
| Concentration: | 0.5 mg/ml |
| Purification: | Purified from mouse ascites fluids or tissue culture supernatant by affinity chromatography (protein A/G) |
| Conjugation: | HRP |
| Storage: | Store at -20°C as received. |
| Stability: | Stable for 12 months from date of receipt. |
| Predicted Protein Size: | 54.6 kDa |
| Gene Name: | Wiskott-Aldrich syndrome like |
| Database Link: | NP_003932 Entrez Gene 73178 Mouse Entrez Gene 8976 Human O00401 |
| Synonyms: | N-WASP; NWASP; WASPB |
| Protein Families: | Druggable Genome |
| Protein Pathways: | Adherens junction, Chemokine signaling pathway, Fc gamma R-mediated phagocytosis, Pathogenic Escherichia coli infection, Regulation of actin cytoskeleton |

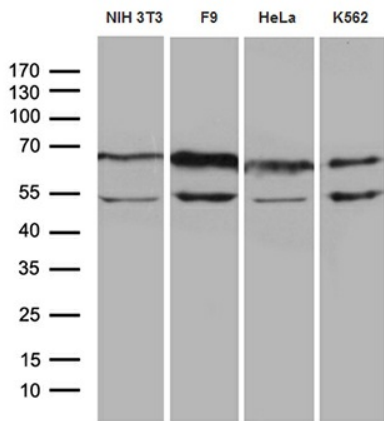


[View online »](#)

Product images:



HEK293T cells were transfected with the pCMV6-ENTRY control (Left lane) or pCMV6-ENTRY WASL ([RC207967], Right lane) cDNA for 48 hrs and lysed. Equivalent amounts of cell lysates (5 ug per lane) were separated by SDS-PAGE and immunoblotted with anti-WASL (1:2000). Positive lysates [LY401293] (100ug) and [LC401293] (20ug) can be purchased separately from OriGene.



Western blot analysis of extracts (35ug) from 4 different cell lines by using anti-WASL monoclonal antibody (1:500).