

## Product datasheet for **TA811280AM**

### ALDH7A1 Mouse Monoclonal Antibody (Biotin conjugated) [Clone ID: OTI1A9]

#### Product data:

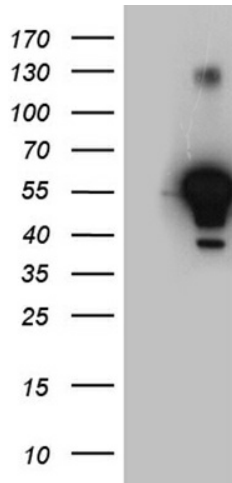
Product Type:	Primary Antibodies
Clone Name:	OTI1A9
Applications:	IHC, WB
Recommended Dilution:	WB 1:500~2000, IHC 1:2000
Reactivity:	Human, Mouse, Rat
Host:	Mouse
Isotype:	IgG1
Clonality:	Monoclonal
Immunogen:	Full length human recombinant protein of human ALDH7A1 (NP_001173) produced in HEK293T cell.
Formulation:	PBS (pH 7.3) containing 1% BSA, 50% glycerol and 0.02% sodium azide.
Concentration:	0.5 mg/ml
Purification:	Purified from mouse ascites fluids or tissue culture supernatant by affinity chromatography (protein A/G)
Conjugation:	Biotin
Storage:	Store at -20°C as received.
Stability:	Stable for 12 months from date of receipt.
Predicted Protein Size:	55.2 kDa
Gene Name:	aldehyde dehydrogenase 7 family member A1
Database Link:	<a href="#">NP_001173</a> <a href="#">Entrez Gene 110695 Mouse</a> <a href="#">Entrez Gene 501 Human</a> <a href="#">P49419</a>
Synonyms:	ATQ1; EPD; PDE
Protein Families:	Druggable Genome



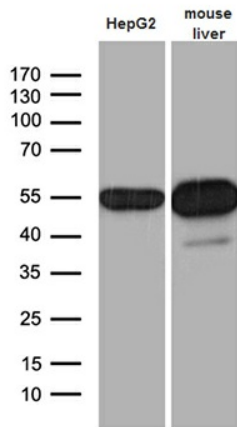
[View online »](#)

**Protein Pathways:**

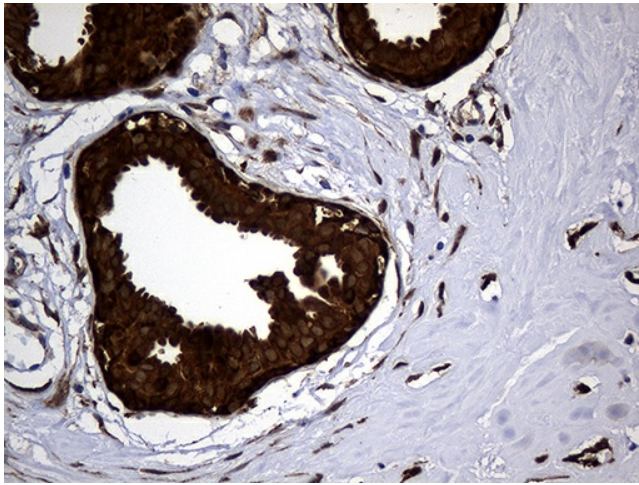
Arginine and proline metabolism, Ascorbate and aldarate metabolism, beta-Alanine metabolism, Butanoate metabolism, Fatty acid metabolism, Glycerolipid metabolism, Glycolysis / Gluconeogenesis, Histidine metabolism, Limonene and pinene degradation, Lysine degradation, Metabolic pathways, Propanoate metabolism, Pyruvate metabolism, Tryptophan metabolism, Valine, leucine and isoleucine degradation

**Product images:**


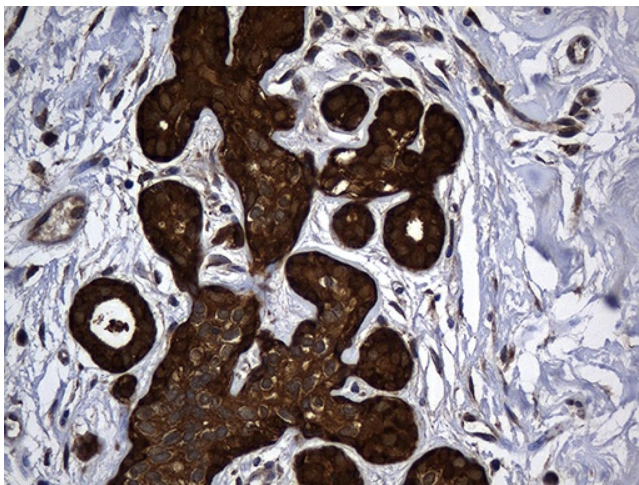
HEK293T cells were transfected with the pCMV6-ENTRY control (Cat# [PS100001], Left lane) or pCMV6-ENTRY ALDH7A1 (Cat# [RC209948], Right lane) cDNA for 48 hrs and lysed. Equivalent amounts of cell lysates (5 ug per lane) were separated by SDS-PAGE and immunoblotted with anti-ALDH7A1 (Cat# [TA811280])(1:2000). Positive lysates [LY432295] (100ug) and [LC432295] (20ug) can be purchased separately from OriGene.



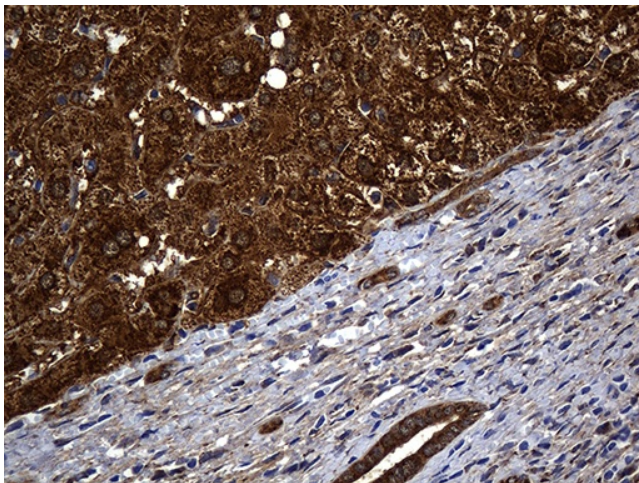
Western blot analysis of extracts (35ug) from HepG2 cell line and mouse liver tissue lysate by using anti-ALDH7A1 monoclonal antibody (1:500).



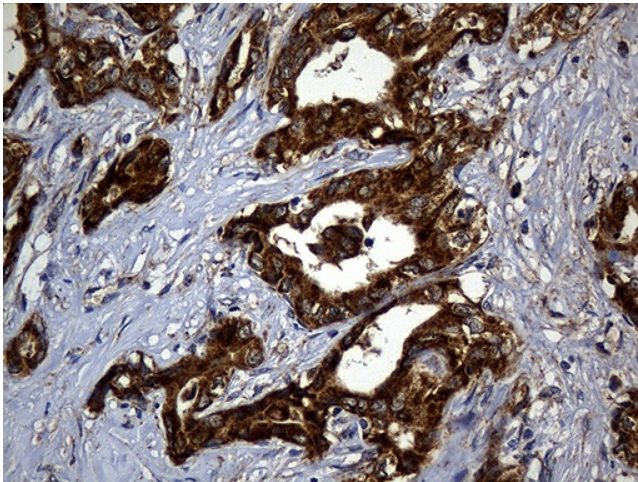
Immunohistochemical staining of paraffin-embedded Human breast tissue within the normal limits using anti-ALDH7A1 mouse monoclonal antibody. (Heat-induced epitope retrieval by 1mM EDTA in 10mM Tris buffer (pH8.5) at 120°C for 3min, [TA811280]) (1:2000)



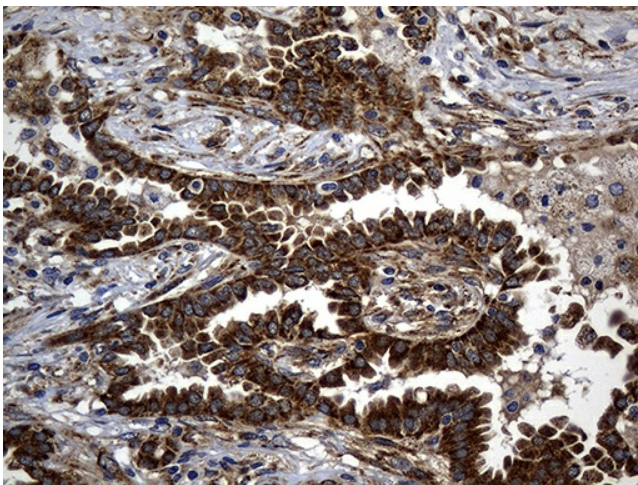
Immunohistochemical staining of paraffin-embedded Adenocarcinoma of Human breast tissue using anti-ALDH7A1 mouse monoclonal antibody. (Heat-induced epitope retrieval by 1mM EDTA in 10mM Tris buffer (pH8.5) at 120°C for 3min, [TA811280]) (1:2000)



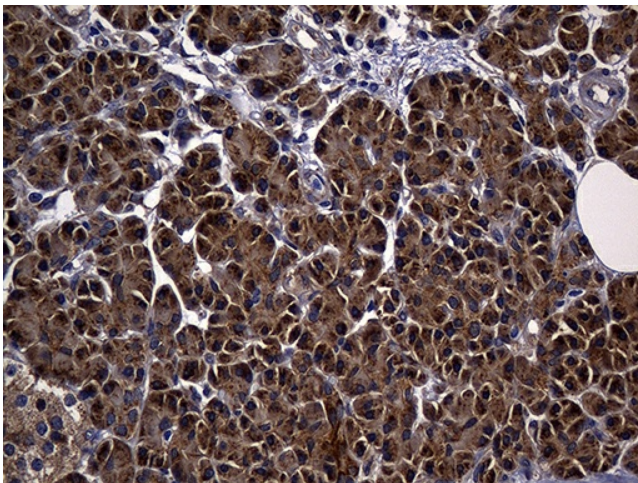
Immunohistochemical staining of paraffin-embedded Human liver tissue within the normal limits using anti-ALDH7A1 mouse monoclonal antibody. (Heat-induced epitope retrieval by 1mM EDTA in 10mM Tris buffer (pH8.5) at 120°C for 3min, [TA811280]) (1:2000)



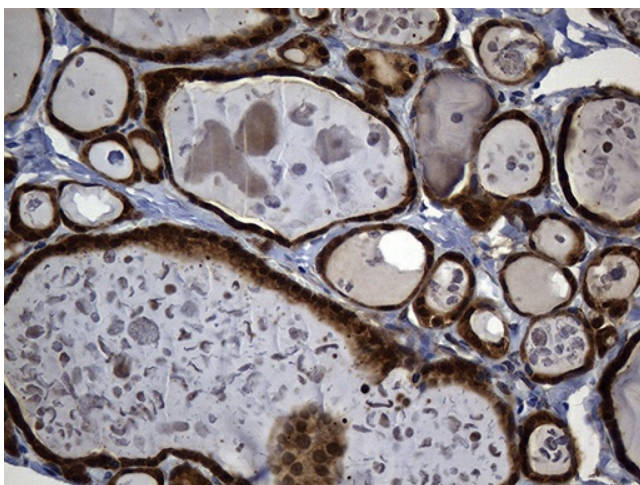
Immunohistochemical staining of paraffin-embedded Carcinoma of Human liver tissue using anti-ALDH7A1 mouse monoclonal antibody. (Heat-induced epitope retrieval by 1mM EDTA in 10mM Tris buffer (pH8.5) at 120°C for 3min, [TA811280]) (1:2000)



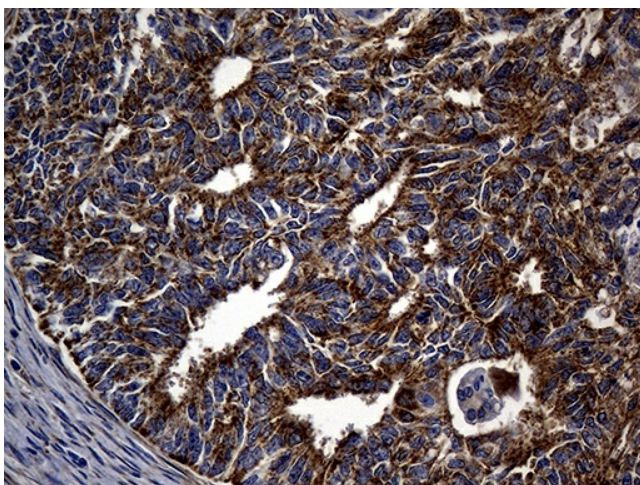
Immunohistochemical staining of paraffin-embedded Carcinoma of Human lung tissue using anti-ALDH7A1 mouse monoclonal antibody. (Heat-induced epitope retrieval by 1mM EDTA in 10mM Tris buffer (pH8.5) at 120°C for 3min, [TA811280]) (1:2000)



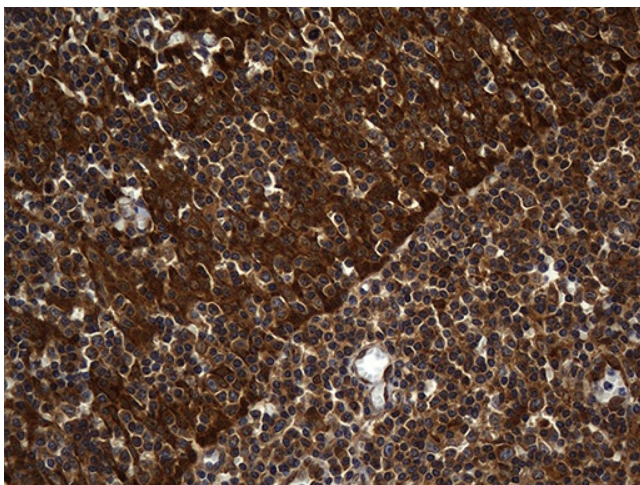
Immunohistochemical staining of paraffin-embedded Human pancreas tissue within the normal limits using anti-ALDH7A1 mouse monoclonal antibody. (Heat-induced epitope retrieval by 1mM EDTA in 10mM Tris buffer (pH8.5) at 120°C for 3min, [TA811280]) (1:2000)



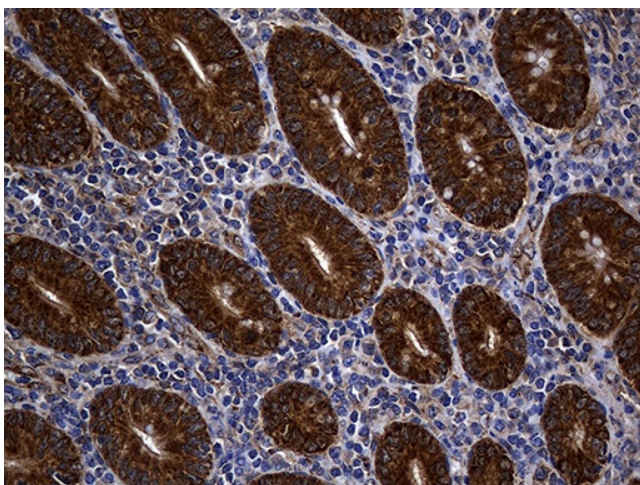
Immunohistochemical staining of paraffin-embedded Human thyroid tissue within the normal limits using anti-ALDH7A1 mouse monoclonal antibody. (Heat-induced epitope retrieval by 1mM EDTA in 10mM Tris buffer (pH8.5) at 120°C for 3min, [TA811280]) (1:2000)



Immunohistochemical staining of paraffin-embedded Adenocarcinoma of Human endometrium tissue using anti-ALDH7A1 mouse monoclonal antibody. (Heat-induced epitope retrieval by 1mM EDTA in 10mM Tris buffer (pH8.5) at 120°C for 3min, [TA811280]) (1:2000)



Immunohistochemical staining of paraffin-embedded Human tonsil within the normal limits using anti-ALDH7A1 mouse monoclonal antibody. (Heat-induced epitope retrieval by 1mM EDTA in 10mM Tris buffer (pH8.5) at 120°C for 3min, [TA811280]) (1:2000)



Immunohistochemical staining of paraffin-embedded Human appendix tissue within the normal limits using anti-ALDH7A1 mouse monoclonal antibody. (Heat-induced epitope retrieval by Tris-EDTA (1:2000))