

Product datasheet for **TA811273**

PSCD4 (CYTH4) Mouse Monoclonal Antibody [Clone ID: OTI4A5]

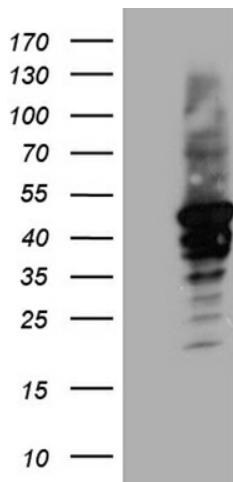
Product data:

Product Type:	Primary Antibodies
Clone Name:	OTI4A5
Applications:	IHC, WB
Recommended Dilution:	WB 1:500~2000, IHC 1:150
Reactivity:	Human, Mouse, Rat
Host:	Mouse
Isotype:	IgG1
Clonality:	Monoclonal
Immunogen:	Full length human recombinant protein of human CYTH4 (NP_037517) produced in HEK293T cell.
Formulation:	PBS (pH 7.3) containing 1% BSA, 50% glycerol and 0.02% sodium azide.
Concentration:	1 mg/ml
Purification:	Purified from mouse ascites fluids or tissue culture supernatant by affinity chromatography (protein A/G)
Conjugation:	Unconjugated
Storage:	Store at -20°C as received.
Stability:	Stable for 12 months from date of receipt.
Predicted Protein Size:	45.5 kDa
Gene Name:	cytohesin 4
Database Link:	NP_037517 Entrez Gene 72318 Mouse Entrez Gene 500906 Rat Entrez Gene 27128 Human Q9UIA0
Synonyms:	CYT4; DJ63G5.1; PSCD4

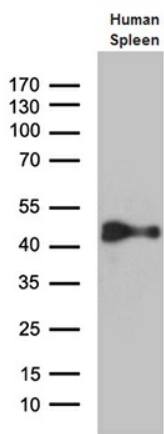


[View online »](#)

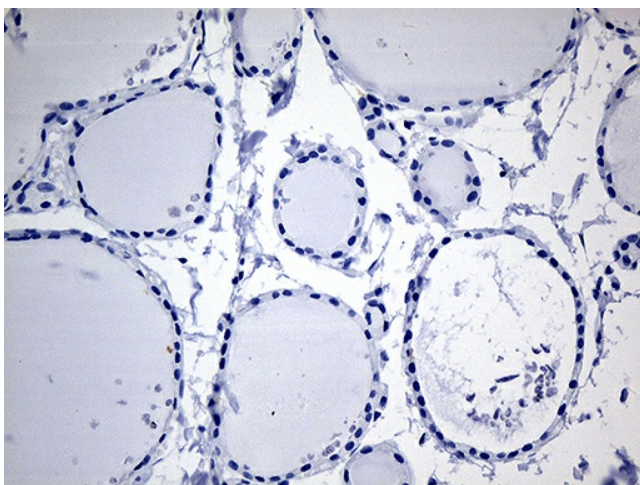
Product images:



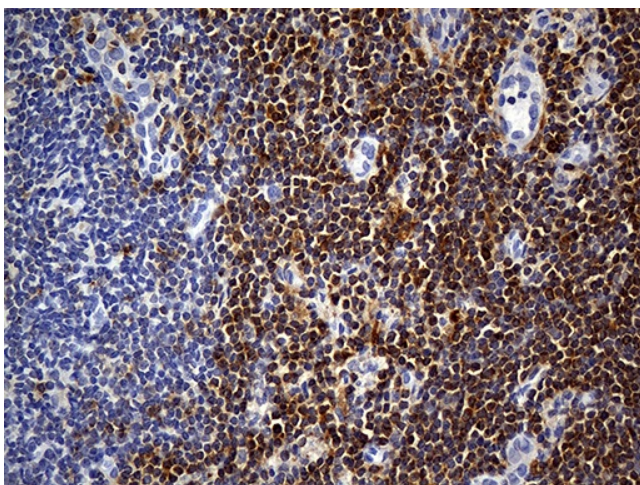
HEK293T cells were transfected with the pCMV6-ENTRY control (Cat# [PS100001], Left lane) or pCMV6-ENTRY CYTH4 (Cat# [RC208043], Right lane) cDNA for 48 hrs and lysed. Equivalent amounts of cell lysates (5 ug per lane) were separated by SDS-PAGE and immunoblotted with anti-CYTH4 (Cat# TA811273)(1:2000). Positive lysates [LY415608] (100ug) and [LC415608] (20ug) can be purchased separately from OriGene.



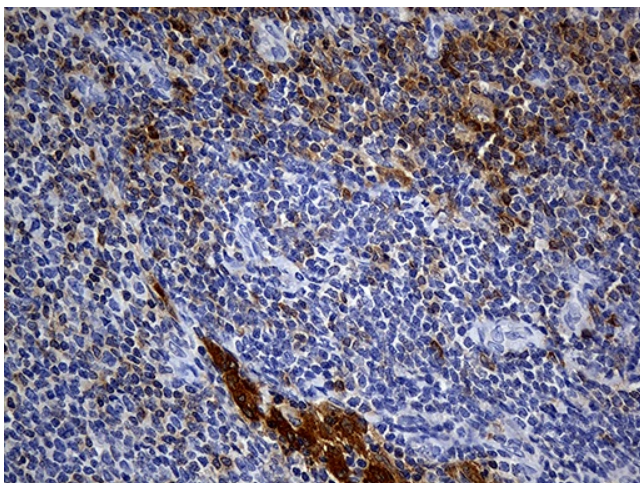
Western blot analysis of extracts (35ug) from human spleen tissue lysate by using anti-CYTH4 monoclonal antibody (1:500).



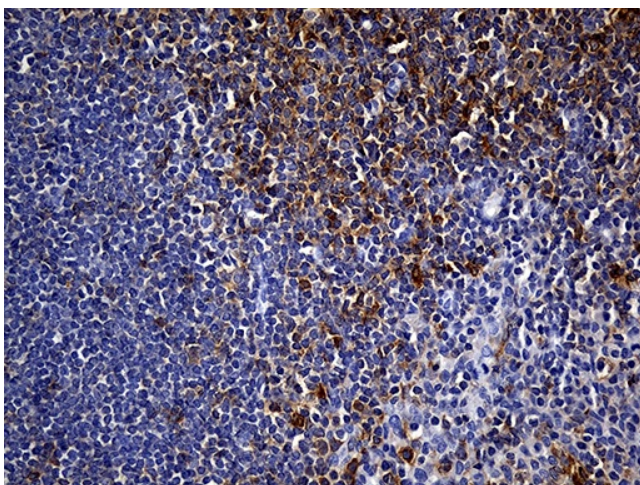
Immunohistochemical staining of paraffin-embedded Human thyroid tissue within the normal limits using anti-CYTH4 mouse monoclonal antibody. This figure shows negative staining. Heat-induced epitope retrieval by EDTA solution buffer pH 8.0 at 120°C for 3 min.



Immunohistochemical staining of paraffin-embedded Carcinoma of Human thyroid tissue using anti-CYTH4 mouse monoclonal antibody. Heat-induced epitope retrieval by EDTA solution buffer pH 8.0 at 120°C for 3 min.



Immunohistochemical staining of paraffin-embedded Human lymphoma tissue using anti-CYTH4 mouse monoclonal antibody. Heat-induced epitope retrieval by EDTA solution buffer pH 8.0 at 120°C for 3 min.



Immunohistochemical staining of paraffin-embedded Human tonsil within the normal limits using anti-CYTH4 mouse monoclonal antibody. Heat-induced epitope retrieval by EDTA solution buffer pH 8.0 at 120°C for 3 min.