

## Product datasheet for **TA811270**

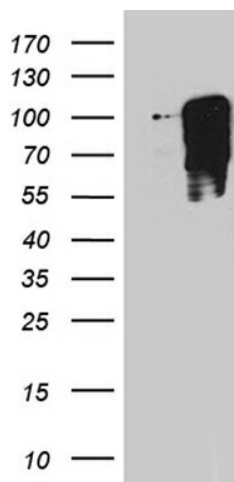
### **TBX3 Mouse Monoclonal Antibody [Clone ID: OTI3B1]**

#### **Product data:**

|                         |  |
|-------------------------|--|
| Product Type:           | Primary Antibodies   |
| Clone Name:             | OTI3B1   |
| Applications:           | WB   |
| Recommended Dilution:   | WB 1:2000  |
| Reactivity:             | Human, Mouse, Rat  |
| Host:                   | Mouse  |
| Isotype:                | IgG1   |
| Clonality:              | Monoclonal   |
| Immunogen:              | Human recombinant protein fragment corresponding to amino acids 244-481 of human TBX3 (NP_057653) produced in E.coli.  |
| Formulation:            | PBS (pH 7.3) containing 1% BSA, 50% glycerol and 0.02% sodium azide.   |
| Concentration:          | 1 mg/ml  |
| Purification:           | Purified from mouse ascites fluids or tissue culture supernatant by affinity chromatography (protein A/G)  |
| Conjugation:            | Unconjugated   |
| Storage:                | Store at -20°C as received.  |
| Stability:              | Stable for 12 months from date of receipt.   |
| Predicted Protein Size: | 79.2 kDa   |
| Gene Name:              | T-box 3  |
| Database Link:          | <a href="#">NP_057653</a><br><a href="#">Entrez Gene 21386 Mouse</a> <a href="#">Entrez Gene 353305 Rat</a> <a href="#">Entrez Gene 6926 Human</a><br><a href="#">O15119</a> |
| Synonyms:               | TBX3-ISO; UMS; XHL   |
| Protein Families:       | Druggable Genome, Transcription Factors  |



[View online »](#)

**Product images:**

HEK293T cells were transfected with the pCMV6-ENTRY control (Left lane) or pCMV6-ENTRY TBX3 ([RC206829], Right lane) cDNA for 48 hrs and lysed. Equivalent amounts of cell lysates (5 ug per lane) were separated by SDS-PAGE and immunoblotted with anti-TBX3 (1:2000). Positive lysates [LY413892] (100ug) and [LC413892] (20ug) can be purchased separately from OriGene.