

Product datasheet for **TA811269AM**

CDC45L (CDC45) Mouse Monoclonal Antibody (Biotin conjugated) [Clone ID: OT18A1]

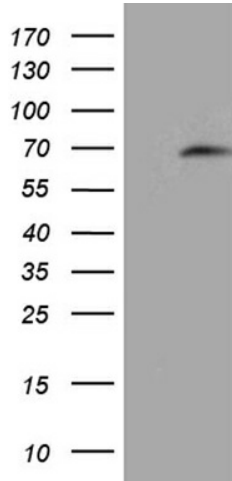
Product data:

Product Type:	Primary Antibodies
Clone Name:	OT18A1
Applications:	WB
Recommended Dilution:	WB 1:500
Reactivity:	Human, Mouse, Rat
Host:	Mouse
Isotype:	IgG1
Clonality:	Monoclonal
Immunogen:	Human recombinant protein fragment corresponding to amino acids 1-270 of human CDC45 (NP_003495) produced in E.coli.
Formulation:	PBS (pH 7.3) containing 1% BSA, 50% glycerol and 0.02% sodium azide.
Concentration:	0.5 mg/ml
Purification:	Purified from mouse ascites fluids or tissue culture supernatant by affinity chromatography (protein A/G)
Conjugation:	Biotin
Storage:	Store at -20°C as received.
Stability:	Stable for 12 months from date of receipt.
Predicted Protein Size:	65.4 kDa
Gene Name:	cell division cycle 45
Database Link:	NP_003495 Entrez Gene 12544 Mouse Entrez Gene 287961 Rat Entrez Gene 8318 Human O75419
Synonyms:	CDC45L; CDC45L2; PORC-PI-1
Protein Families:	Druggable Genome, Stem cell - Pluripotency
Protein Pathways:	Cell cycle



[View online »](#)

Product images:



HEK293T cells were transfected with the pCMV6-ENTRY control (Left lane) or pCMV6-ENTRY CDC45 ([RC202442], Right lane) cDNA for 48 hrs and lysed. Equivalent amounts of cell lysates (5 ug per lane) were separated by SDS-PAGE and immunoblotted with anti-CDC45 (1:500). Positive lysates [LY418640] (100ug) and [LC418640] (20ug) can be purchased separately from OriGene.