

Product datasheet for **TA811260**

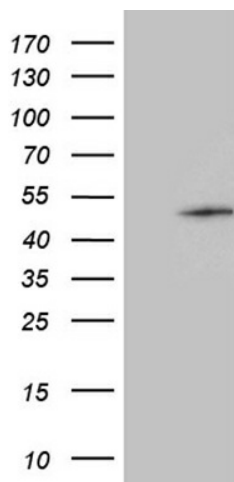
GABPB2 (GABPB1) Mouse Monoclonal Antibody [Clone ID: OTI3F1]

Product data:

Product Type:	Primary Antibodies
Clone Name:	OTI3F1
Applications:	WB
Recommended Dilution:	WB 1:2000
Reactivity:	Human, Mouse, Rat
Host:	Mouse
Isotype:	IgG1
Clonality:	Monoclonal
Immunogen:	Human recombinant protein fragment corresponding to amino acids 128-360 of human GABPB1 (NP_002032) produced in E.coli.
Formulation:	PBS (pH 7.3) containing 1% BSA, 50% glycerol and 0.02% sodium azide.
Concentration:	1 mg/ml
Purification:	Purified from mouse ascites fluids or tissue culture supernatant by affinity chromatography (protein A/G)
Conjugation:	Unconjugated
Storage:	Store at -20°C as received.
Stability:	Stable for 12 months from date of receipt.
Predicted Protein Size:	37.9 kDa
Gene Name:	GA binding protein transcription factor beta subunit 1
Database Link:	NP_002032 Entrez Gene 14391 Mouse Entrez Gene 499883 Rat Entrez Gene 2553 Human Q06547
Synonyms:	BABPB2; E4TF1; E4TF1-47; E4TF1-53; E4TF1B; GABPB; GABPB-1; GABPB2; NRF2B1; NRF2B2
Protein Families:	Transcription Factors



[View online »](#)

Product images:

HEK293T cells were transfected with the pCMV6-ENTRY control (Left lane) or pCMV6-ENTRY GABPB1 ([RC204396], Right lane) cDNA for 48 hrs and lysed. Equivalent amounts of cell lysates (5 ug per lane) were separated by SDS-PAGE and immunoblotted with anti-GABPB1 (1:2000). Positive lysates [LY419570] (100ug) and [LC419570] (20ug) can be purchased separately from OriGene.