

Product datasheet for **TA811256**

Paxillin (PXN) Mouse Monoclonal Antibody [Clone ID: OTI1H10]

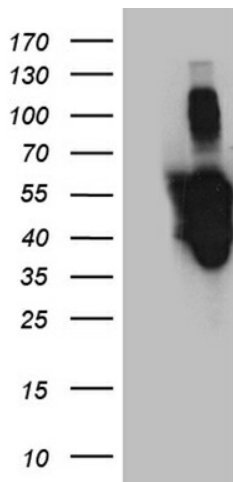
Product data:

Product Type:	Primary Antibodies
Clone Name:	OTI1H10
Applications:	WB
Recommended Dilution:	WB 1:500~2000
Reactivity:	Human, Mouse, Rat
Host:	Mouse
Isotype:	IgG1
Clonality:	Monoclonal
Immunogen:	Full length human recombinant protein of human PXN (NP_079433) produced in E.coli.
Formulation:	PBS (pH 7.3) containing 1% BSA, 50% glycerol and 0.02% sodium azide.
Concentration:	1 mg/ml
Purification:	Purified from mouse ascites fluids or tissue culture supernatant by affinity chromatography (protein A/G)
Conjugation:	Unconjugated
Storage:	Store at -20°C as received.
Stability:	Stable for 12 months from date of receipt.
Predicted Protein Size:	46.4 kDa
Gene Name:	paxillin
Database Link:	NP_079433 Entrez Gene 19303 Mouse Entrez Gene 360820 Rat Entrez Gene 5829 Human P49023
Synonyms:	FLJ16691
Protein Families:	Druggable Genome, Stem cell - Pluripotency
Protein Pathways:	Chemokine signaling pathway, Focal adhesion, Leukocyte transendothelial migration, Regulation of actin cytoskeleton, VEGF signaling pathway

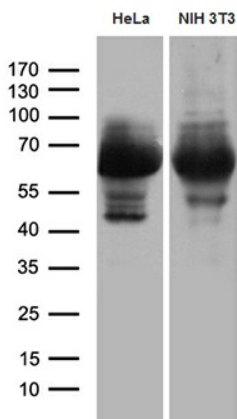


[View online »](#)

Product images:



HEK293T cells were transfected with the pCMV6-ENTRY control (Cat# [PS100001], Left lane) or pCMV6-ENTRY PXN (Cat# [RC225692], Right lane) cDNA for 48 hrs and lysed. Equivalent amounts of cell lysates (5 ug per lane) were separated by SDS-PAGE and immunoblotted with anti-PXN (Cat# TA811256)(1:2000). Positive lysates [LY429750] (100ug) and [LC429750] (20ug) can be purchased separately from OriGene.



Western blot analysis of extracts (35ug) from 2 different cell lines by using anti-PXN monoclonal antibody (1:500).