

## Product datasheet for **TA811239M**

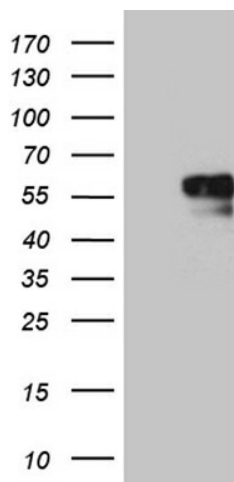
### **NAGA Mouse Monoclonal Antibody [Clone ID: OTI6F3]**

#### **Product data:**

Product Type:	Primary Antibodies
Clone Name:	OTI6F3
Applications:	WB
Recommended Dilution:	WB 1:2000
Reactivity:	Human
Host:	Mouse
Isotype:	IgG1
Clonality:	Monoclonal
Immunogen:	Full length human recombinant protein of human NAGA (NP_000253) produced in HEK293T cell.
Formulation:	PBS (pH 7.3) containing 1% BSA, 50% glycerol and 0.02% sodium azide.
Concentration:	1 mg/ml
Purification:	Purified from mouse ascites fluids or tissue culture supernatant by affinity chromatography (protein A/G)
Conjugation:	Unconjugated
Storage:	Store at -20°C as received.
Stability:	Stable for 12 months from date of receipt.
Predicted Protein Size:	46.56 kDa
Gene Name:	alpha-N-acetylgalactosaminidase
Database Link:	<a href="#">NP_000253</a> <a href="#">Entrez Gene 4668 Human</a> <a href="#">P17050</a>
Synonyms:	D22S674; GALB
Protein Families:	Druggable Genome
Protein Pathways:	Glycosphingolipid biosynthesis - globo series, Lysosome



[View online »](#)

**Product images:**


HEK293T cells were transfected with the pCMV6-ENTRY control (Left lane) or pCMV6-ENTRY NAGA ([RC200707], Right lane) cDNA for 48 hrs and lysed. Equivalent amounts of cell lysates (5 ug per lane) were separated by SDS-PAGE and immunoblotted with anti-NAGA (1:2000). Positive lysates [LY400100] (100ug) and [LC400100] (20ug) can be purchased separately from OriGene.