

Product datasheet for **TA811238S**

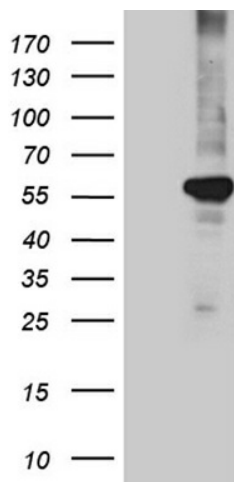
PPAR delta (PPARD) Mouse Monoclonal Antibody [Clone ID: OTI4D10]

Product data:

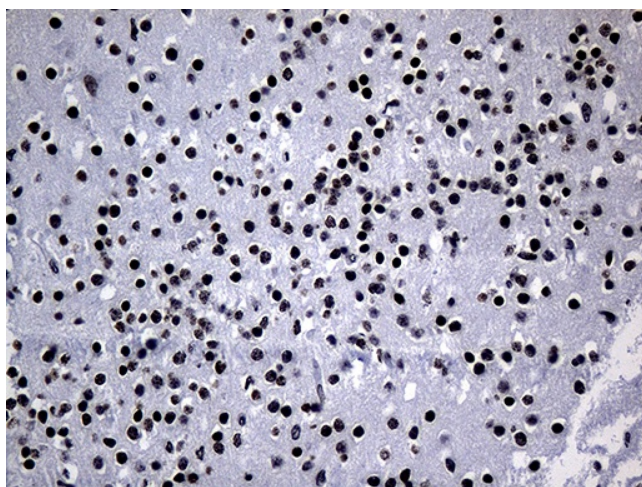
Product Type:	Primary Antibodies
Clone Name:	OTI4D10
Applications:	IHC, WB
Recommended Dilution:	WB 1:2000, IHC 1:150
Reactivity:	Human, Mouse, Rat
Host:	Mouse
Isotype:	IgG1
Clonality:	Monoclonal
Immunogen:	Human recombinant protein fragment corresponding to amino acids 1-244 of human PPARD (NP_006229) produced in E.coli.
Formulation:	PBS (pH 7.3) containing 1% BSA, 50% glycerol and 0.02% sodium azide.
Concentration:	1 mg/ml
Purification:	Purified from mouse ascites fluids or tissue culture supernatant by affinity chromatography (protein A/G)
Conjugation:	Unconjugated
Storage:	Store at -20°C as received.
Stability:	Stable for 12 months from date of receipt.
Predicted Protein Size:	49.7 kDa
Gene Name:	peroxisome proliferator activated receptor delta
Database Link:	NP_006229 Entrez Gene 19015 Mouse Entrez Gene 25682 Rat Entrez Gene 5467 Human Q03181
Synonyms:	FAAR; NR1C2; NUC1; NUCI; NUCII; PPARB
Protein Families:	Druggable Genome, Nuclear Hormone Receptor, Transcription Factors
Protein Pathways:	Acute myeloid leukemia, Pathways in cancer, PPAR signaling pathway, Wnt signaling pathway



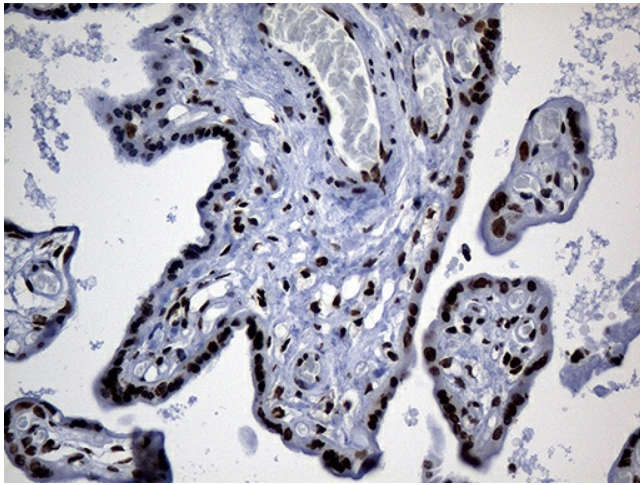
[View online »](#)

Product images:

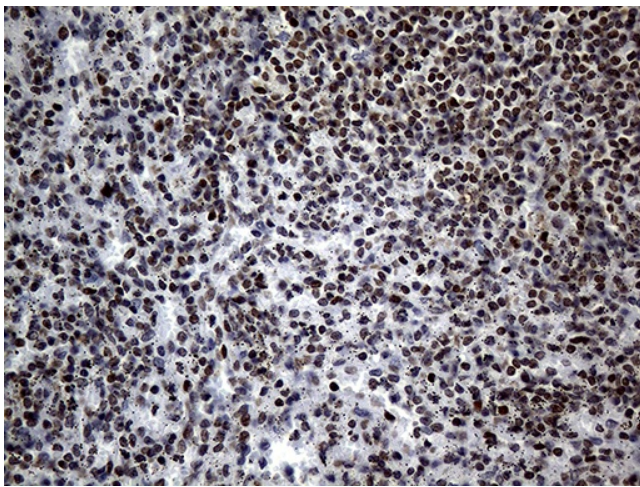
HEK293T cells were transfected with the pCMV6-ENTRY control (Left lane) or pCMV6-ENTRY PPARD ([RC214735], Right lane) cDNA for 48 hrs and lysed. Equivalent amounts of cell lysates (5 ug per lane) were separated by SDS-PAGE and immunoblotted with anti-PPARD (1:2000). Positive lysates [LY416782] (100ug) and [LC416782] (20ug) can be purchased separately from OriGene.



Immunohistochemical staining of paraffin-embedded Human adult brain tissue within the normal limits using anti-PPARD mouse monoclonal antibody. (Heat-induced epitope retrieval by 1mM EDTA in 10mM Tris buffer (pH8.5) at 120°C for 3min, [TA811238]) (1:150)



Immunohistochemical staining of paraffin-embedded Human placenta tissue within the normal limits using anti-PPARD mouse monoclonal antibody. (Heat-induced epitope retrieval by 1mM EDTA in 10mM Tris buffer (pH8.5) at 120°C for 3min, [TA811238]) (1:150)



Immunohistochemical staining of paraffin-embedded Human spleen tissue within the normal limits using anti-PPARD mouse monoclonal antibody. (Heat-induced epitope retrieval by Tris-EDTA (1:150)