

## Product datasheet for **TA811238BM**

### PPAR delta (PPARD) Mouse Monoclonal Antibody (HRP conjugated) [Clone ID: OTI4D10]

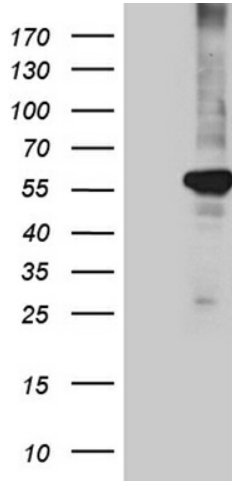
#### Product data:

Product Type:	Primary Antibodies
Clone Name:	OTI4D10
Applications:	IHC, WB
Recommended Dilution:	WB 1:2000, IHC 1:150
Reactivity:	Human, Mouse, Rat
Host:	Mouse
Isotype:	IgG1
Clonality:	Monoclonal
Immunogen:	Human recombinant protein fragment corresponding to amino acids 1-244 of human PPARD (NP_006229) produced in E.coli.
Formulation:	PBS (pH 7.3) containing 1% BSA, 50% glycerol.
Concentration:	0.5 mg/ml
Purification:	Purified from mouse ascites fluids or tissue culture supernatant by affinity chromatography (protein A/G)
Conjugation:	HRP
Storage:	Store at -20°C as received.
Stability:	Stable for 12 months from date of receipt.
Predicted Protein Size:	49.7 kDa
Gene Name:	peroxisome proliferator activated receptor delta
Database Link:	<a href="#">NP_006229</a> <a href="#">Entrez Gene 19015 Mouse</a> <a href="#">Entrez Gene 25682 Rat</a> <a href="#">Entrez Gene 5467 Human</a> <a href="#">Q03181</a>
Synonyms:	FAAR; NR1C2; NUC1; NUCI; NUCII; PPARB
Protein Families:	Druggable Genome, Nuclear Hormone Receptor, Transcription Factors
Protein Pathways:	Acute myeloid leukemia, Pathways in cancer, PPAR signaling pathway, Wnt signaling pathway

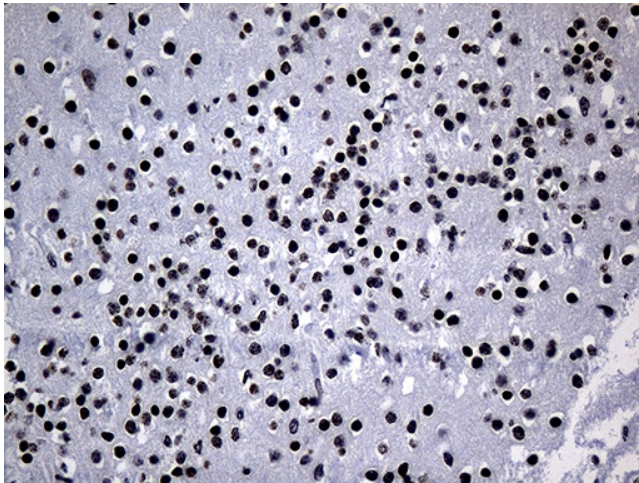


[View online »](#)

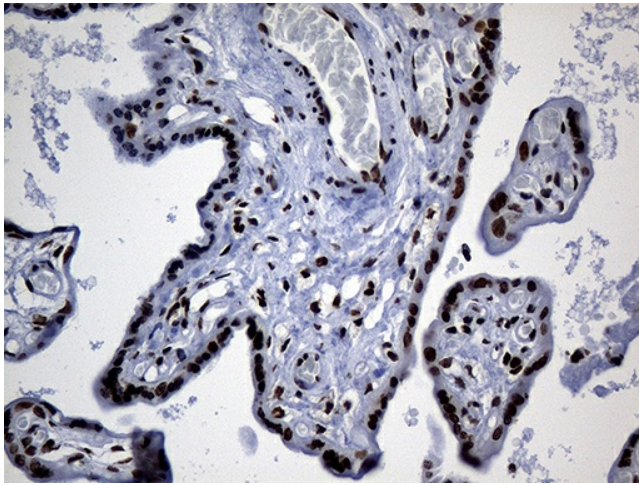
**Product images:**



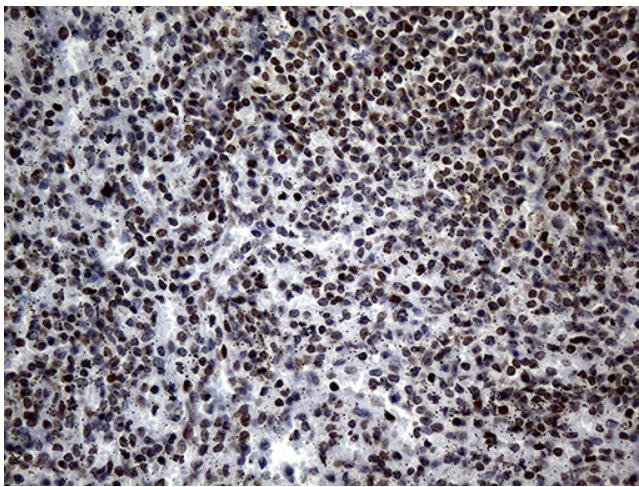
HEK293T cells were transfected with the pCMV6-ENTRY control (Left lane) or pCMV6-ENTRY PPARD ([RC214735], Right lane) cDNA for 48 hrs and lysed. Equivalent amounts of cell lysates (5 ug per lane) were separated by SDS-PAGE and immunoblotted with anti-PPARD (1:2000). Positive lysates [LY416782] (100ug) and [LC416782] (20ug) can be purchased separately from OriGene.



Immunohistochemical staining of paraffin-embedded Human adult brain tissue within the normal limits using anti-PPARD mouse monoclonal antibody. (Heat-induced epitope retrieval by 1mM EDTA in 10mM Tris buffer (pH8.5) at 120°C for 3min, [TA811238]) (1:150)



Immunohistochemical staining of paraffin-embedded Human placenta tissue within the normal limits using anti-PPARD mouse monoclonal antibody. (Heat-induced epitope retrieval by 1mM EDTA in 10mM Tris buffer (pH8.5) at 120°C for 3min, [TA811238]) (1:150)



Immunohistochemical staining of paraffin-embedded Human spleen tissue within the normal limits using anti-PPARD mouse monoclonal antibody. (Heat-induced epitope retrieval by Tris-EDTA (1:150)