

## Product datasheet for **TA811235M**

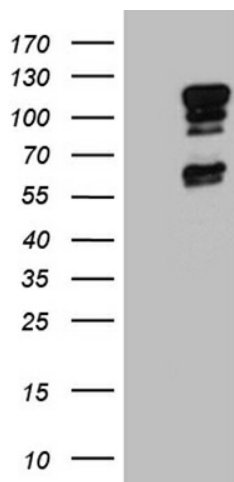
### **E74 like factor 1 (ELF1) Mouse Monoclonal Antibody [Clone ID: OTI3D3]**

#### **Product data:**

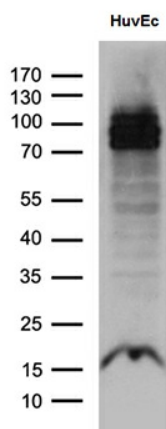
Product Type:	Primary Antibodies
Clone Name:	OTI3D3
Applications:	WB
Recommended Dilution:	WB 1:500~2000
Reactivity:	Human, Mouse, Rat
Host:	Mouse
Isotype:	IgG1
Clonality:	Monoclonal
Immunogen:	Full length human recombinant protein of human ELF1 (NP_758961) produced in E.coli.
Formulation:	PBS (pH 7.3) containing 1% BSA, 50% glycerol and 0.02% sodium azide.
Concentration:	1 mg/ml
Purification:	Purified from mouse ascites fluids or tissue culture supernatant by affinity chromatography (protein A/G)
Conjugation:	Unconjugated
Storage:	Store at -20°C as received.
Stability:	Stable for 12 months from date of receipt.
Gene Name:	E74 like ETS transcription factor 1
Database Link:	<a href="#">NP_758961</a> <a href="#">Entrez Gene 13709 Mouse</a> <a href="#">Entrez Gene 85424 Rat</a> <a href="#">Entrez Gene 1997 Human</a> <a href="#">P32519</a>
Synonyms:	E74-like factor 1 (ets domain transcription factor); OTTHUMP00000018310
Protein Families:	Transcription Factors



[View online »](#)

**Product images:**


HEK293T cells were transfected with the pCMV6-ENTRY control (Cat# [PS100001], Left lane) or pCMV6-ENTRY ELF1 (Cat# [RC207140], Right lane) cDNA for 48 hrs and lysed. Equivalent amounts of cell lysates (5 ug per lane) were separated by SDS-PAGE and immunoblotted with anti-ELF1 (Cat# [TA811235])(1:2000).



Western blot analysis of extracts (35ug) from HUVEC cell line by using anti-ELF1 monoclonal antibody (1:500).