

## Product datasheet for **TA811229M**

### SorLA (SORL1) Mouse Monoclonal Antibody [Clone ID: OTI2D5]

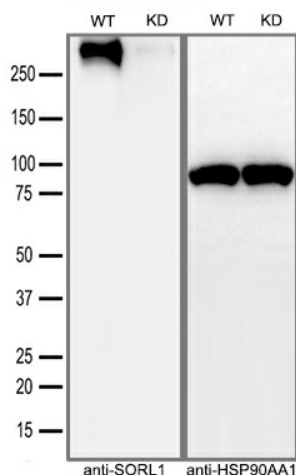
#### Product data:

Product Type:	Primary Antibodies
Clone Name:	OTI2D5
Applications:	IHC, WB
Recommended Dilution:	WB 1:500~2000, IHC 1:2000
Reactivity:	Human, Rat, Mouse
Host:	Mouse
Isotype:	IgG2b
Clonality:	Monoclonal
Immunogen:	Human recombinant protein fragment corresponding to amino acids 573-753 of human SORL1 (NP_003096) produced in E.coli.
Formulation:	PBS (pH 7.3) containing 1% BSA, 50% glycerol and 0.02% sodium azide.
Concentration:	1 mg/ml
Purification:	Purified from mouse ascites fluids or tissue culture supernatant by affinity chromatography (protein A/G)
Conjugation:	Unconjugated
Storage:	Store at -20°C as received.
Stability:	Stable for 12 months from date of receipt.
Gene Name:	sortilin-related receptor, L(DLR class) A repeats containing
Database Link:	<a href="#">NP_003096</a> <a href="#">Entrez Gene 20660 Mouse</a> <a href="#">Entrez Gene 300652 Rat</a> <a href="#">Entrez Gene 6653 Human</a> <a href="#">Q92673</a>
Synonyms:	C11orf32; gp250; LR11; LRP9; SORLA; SorLA-1
Protein Families:	Druggable Genome, Transmembrane

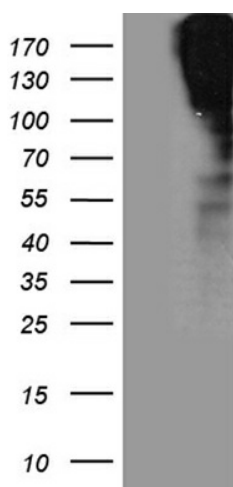


[View online »](#)

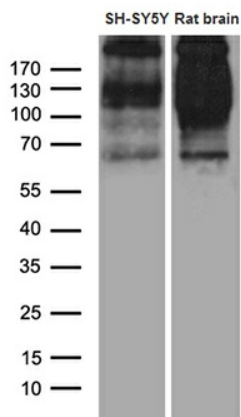
## Product images:



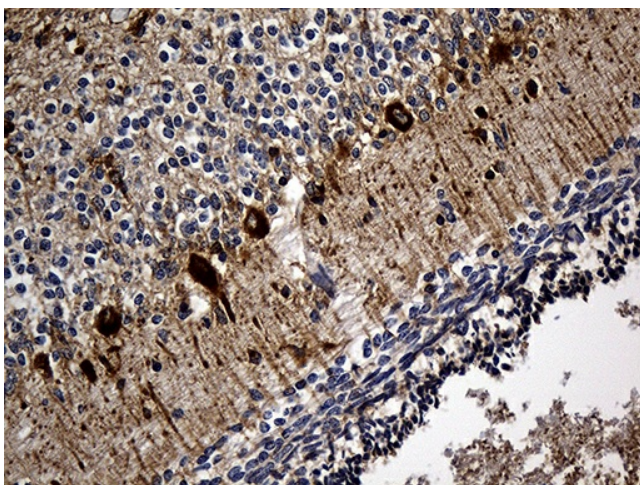
Equivalent amounts of cell lysates (30 ug per lane) of wild-type HeLa cells (WT) and SORL1-Knockdown HeLa cells (KD) were separated by SDS-PAGE and immunoblotted with anti-SORL1 monoclonal antibody [TA811229] (1:2500). Then the blotted membrane was stripped and reprobed with anti-HSP90AA1 antibody as a loading control.



HEK293T cells were transfected with the pCMV6-ENTRY control (Cat# [PS100001], Left lane) or pCMV6-ENTRY SORL1 (Cat# [RC214154], Right lane) cDNA for 48 hrs and lysed. Equivalent amounts of cell lysates (5 ug per lane) were separated by SDS-PAGE and immunoblotted with anti-SORL1 (Cat# [TA811229])(1:2000).



Western blot analysis of extracts (35ug) from SH-SY5Y cell line and rat brain tissue lysate by using anti-SORL1 monoclonal antibody (1:500).



Immunohistochemical staining of paraffin-embedded Human embryonic cerebellum within the normal limits using anti-SORL1 mouse monoclonal antibody. Heat-induced epitope retrieval by EDTA solution buffer pH 8.0 at 120°C for 3 min.