

## Product datasheet for **TA811221M**

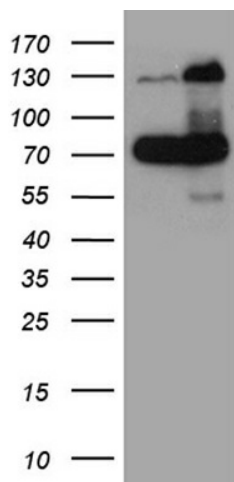
### **RAD21 Mouse Monoclonal Antibody [Clone ID: OTI2A12]**

#### **Product data:**

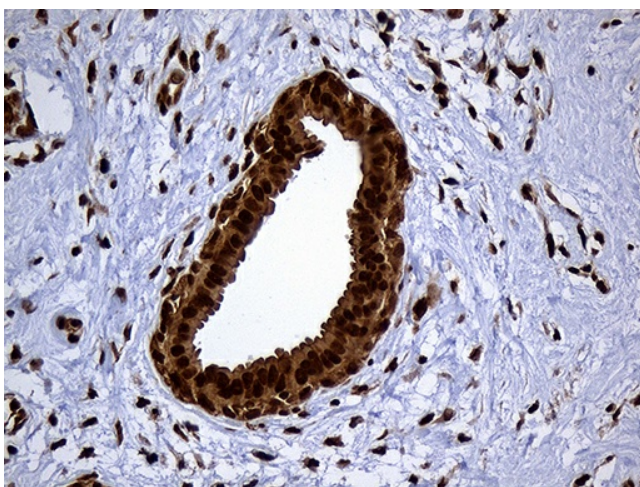
Product Type:	Primary Antibodies
Clone Name:	OTI2A12
Applications:	IHC, WB
Recommended Dilution:	WB 1:2000, IHC 1:2000
Reactivity:	Human, Mouse, Rat
Host:	Mouse
Isotype:	IgG2b
Clonality:	Monoclonal
Immunogen:	Human recombinant protein fragment corresponding to amino acids 193-458 of human RAD21 (NP_006256) produced in E.coli.
Formulation:	PBS (pH 7.3) containing 1% BSA, 50% glycerol and 0.02% sodium azide.
Concentration:	1 mg/ml
Purification:	Purified from mouse ascites fluids or tissue culture supernatant by affinity chromatography (protein A/G)
Conjugation:	Unconjugated
Storage:	Store at -20°C as received.
Stability:	Stable for 12 months from date of receipt.
Predicted Protein Size:	71.5 kDa
Gene Name:	RAD21 cohesin complex component
Database Link:	<a href="#">NP_006256</a> <a href="#">Entrez Gene 19357 Mouse</a> <a href="#">Entrez Gene 314949 Rat</a> <a href="#">Entrez Gene 5885 Human</a> <a href="#">O60216</a>
Synonyms:	CDLS4; hHR21; HR21; HRAD21; MCD1; NXP1; SCC1
Protein Families:	Druggable Genome
Protein Pathways:	Cell cycle


[View online »](#)

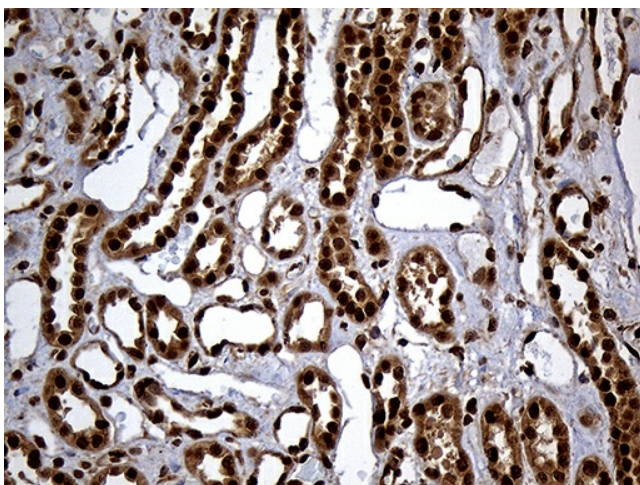
## Product images:



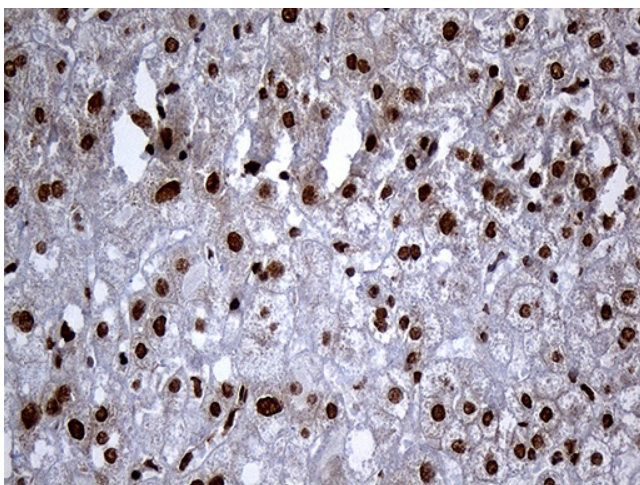
HEK293T cells were transfected with the pCMV6-ENTRY control (Left lane) or pCMV6-ENTRY RAD21 ([RC208262], Right lane) cDNA for 48 hrs and lysed. Equivalent amounts of cell lysates (5 ug per lane) were separated by SDS-PAGE and immunoblotted with anti-RAD21 (1:2000). Positive lysates [LY401887] (100ug) and [LC401887] (20ug) can be purchased separately from OriGene.



Immunohistochemical staining of paraffin-embedded Human breast tissue within the normal limits using anti-RAD21 mouse monoclonal antibody. Heat-induced epitope retrieval by EDTA solution buffer pH 8.0 at 120°C for 3 min.



Immunohistochemical staining of paraffin-embedded Human Kidney tissue within the normal limits using anti-RAD21 mouse monoclonal antibody. Heat-induced epitope retrieval by EDTA solution buffer pH 8.0 at 120°C for 3 min.



Immunohistochemical staining of paraffin-embedded Human liver tissue within the normal limits using anti-RAD21 mouse monoclonal antibody. Heat-induced epitope retrieval by EDTA solution buffer pH 8.0 at 120°C for 3 min.