

Product datasheet for **TA811217AM**

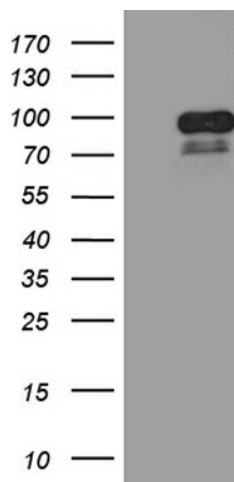
CCDC27 Mouse Monoclonal Antibody (Biotin conjugated) [Clone ID: OTI9C6]

Product data:

Product Type:	Primary Antibodies
Clone Name:	OTI9C6
Applications:	WB
Recommended Dilution:	WB 1:2000
Reactivity:	Human
Host:	Mouse
Isotype:	IgG1
Clonality:	Monoclonal
Immunogen:	Full length human recombinant protein of human CCDC27 (NP_689705) produced in E.coli.
Formulation:	PBS (pH 7.3) containing 1% BSA, 50% glycerol and 0.02% sodium azide.
Concentration:	0.5 mg/ml
Purification:	Purified from mouse ascites fluids or tissue culture supernatant by affinity chromatography (protein A/G)
Conjugation:	Biotin
Storage:	Store at -20°C as received.
Stability:	Stable for 12 months from date of receipt.
Predicted Protein Size:	75.2 kDa
Gene Name:	coiled-coil domain containing 27
Database Link:	NP_689705 Entrez Gene 148870 Human Q2M243
Synonyms:	RP1-286D6.1



[View online »](#)

Product images:

HEK293T cells were transfected with the pCMV6-ENTRY control (Left lane) or pCMV6-ENTRY CCDC27 ([RC211330], Right lane) cDNA for 48 hrs and lysed. Equivalent amounts of cell lysates (5 ug per lane) were separated by SDS-PAGE and immunoblotted with anti-CCDC27 (1:2000). Positive lysates [LY407499] (100ug) and [LC407499] (20ug) can be purchased separately from OriGene.