

Product datasheet for **TA811213S**

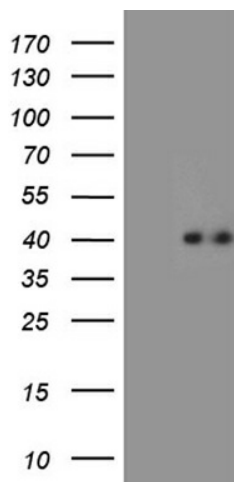
AMCase (CHIA) Mouse Monoclonal Antibody [Clone ID: OTI3D8]

Product data:

Product Type:	Primary Antibodies
Clone Name:	OTI3D8
Applications:	WB
Recommended Dilution:	WB 1:2000
Reactivity:	Human
Host:	Mouse
Isotype:	IgG2b
Clonality:	Monoclonal
Immunogen:	Full length human recombinant protein of human CHIA (NP_068569) produced in E.coli.
Formulation:	PBS (pH 7.3) containing 1% BSA, 50% glycerol and 0.02% sodium azide.
Concentration:	1 mg/ml
Purification:	Purified from mouse ascites fluids or tissue culture supernatant by affinity chromatography (protein A/G)
Conjugation:	Unconjugated
Storage:	Store at -20°C as received.
Stability:	Stable for 12 months from date of receipt.
Predicted Protein Size:	40 kDa
Gene Name:	chitinase, acidic
Database Link:	NP_068569 Entrez Gene 27159 Human Q9BZP6
Synonyms:	AMCASE; CHIT2; TSA1902
Protein Families:	Secreted Protein
Protein Pathways:	Amino sugar and nucleotide sugar metabolism



[View online »](#)

Product images:

HEK293T cells were transfected with the pCMV6-ENTRY control (Left lane) or pCMV6-ENTRY CHIA ([RC206441], Right lane) cDNA for 48 hrs and lysed. Equivalent amounts of cell lysates (5 ug per lane) were separated by SDS-PAGE and immunoblotted with anti-CHIA (1:2000). Positive lysates [LY411918] (100ug) and [LC411918] (20ug) can be purchased separately from OriGene.