

## Product datasheet for **TA811208S**

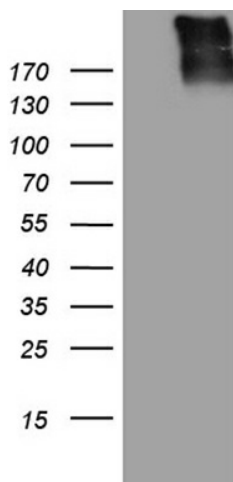
### AKAP12 Mouse Monoclonal Antibody [Clone ID: OTI1B6]

#### Product data:

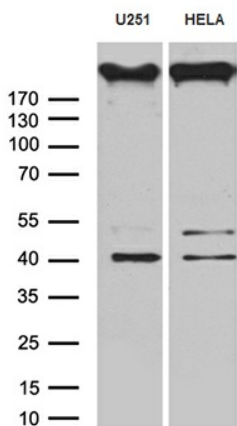
Product Type:	Primary Antibodies
Clone Name:	OTI1B6
Applications:	IHC, WB
Recommended Dilution:	WB 1:500~2000, IHC 1:500
Reactivity:	Human
Host:	Mouse
Isotype:	IgG2b
Clonality:	Monoclonal
Immunogen:	Human recombinant protein fragment corresponding to amino acids 266-557 of human AKAP12 (NP_005091) produced in E.coli.
Formulation:	PBS (pH 7.3) containing 1% BSA, 50% glycerol and 0.02% sodium azide.
Concentration:	1 mg/ml
Purification:	Purified from mouse ascites fluids or tissue culture supernatant by affinity chromatography (protein A/G)
Conjugation:	Unconjugated
Storage:	Store at -20°C as received.
Stability:	Stable for 12 months from date of receipt.
Predicted Protein Size:	191.3 kDa
Gene Name:	A-kinase anchoring protein 12
Database Link:	<a href="#">NP_005091</a> <a href="#">Entrez Gene 9590 Human</a> <a href="#">Q02952</a>
Synonyms:	AKAP250; SSeCKS
Protein Families:	Druggable Genome



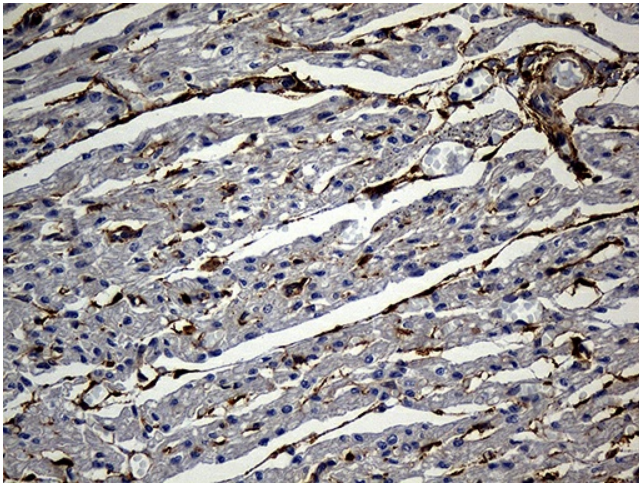
[View online »](#)

**Product images:**


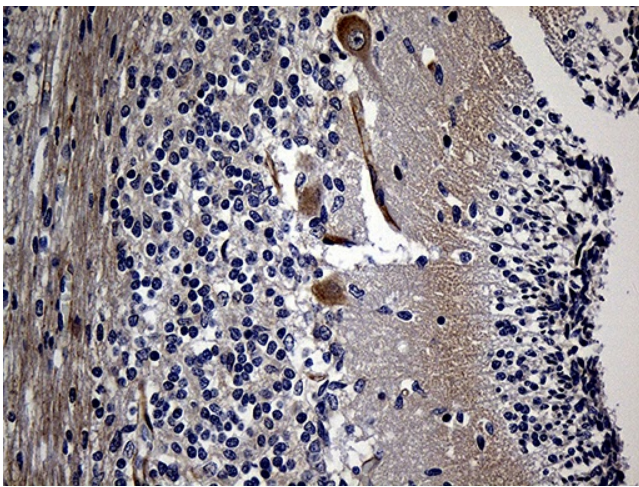
HEK293T cells were transfected with the pCMV6-ENTRY control (Cat# [PS100001], Left lane) or pCMV6-ENTRY AKAP12 (Cat# [RC221620], Right lane) cDNA for 48 hrs and lysed. Equivalent amounts of cell lysates (5 ug per lane) were separated by SDS-PAGE and immunoblotted with anti-AKAP12 (Cat# [TA811208])(1:2000). Positive lysates [LY417515] (100ug) and [LC417515] (20ug) can be purchased separately from OriGene.



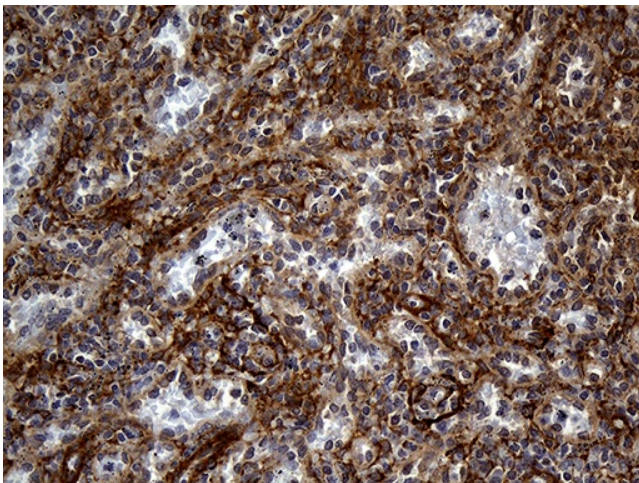
Western blot analysis of extracts (35ug) from 2 different cell lines by using anti-AKAP12 monoclonal antibody (1:500).



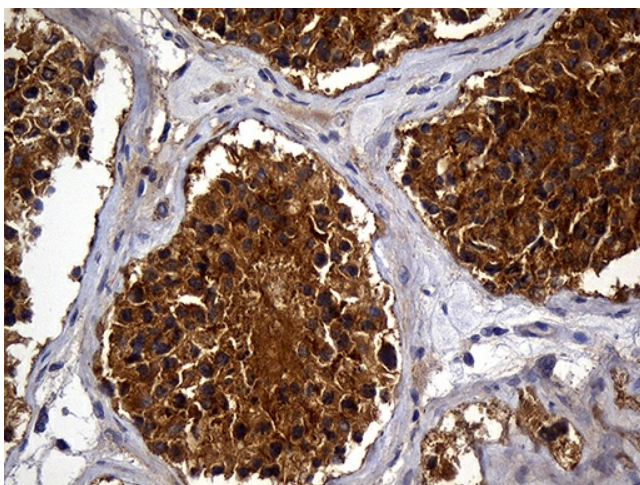
Immunohistochemical staining of paraffin-embedded Human adult heart tissue within the normal limits using anti-AKAP12 mouse monoclonal antibody. (Heat-induced epitope retrieval by 1mM EDTA in 10mM Tris buffer (pH8.5) at 120°C for 3min, [TA811208]) (1:500)



Immunohistochemical staining of paraffin-embedded Human embryonic cerebellum within the normal limits using anti-AKAP12 mouse monoclonal antibody. (Heat-induced epitope retrieval by 1mM EDTA in 10mM Tris buffer (pH8.5) at 120°C for 3min, [TA811208]) (1:500)



Immunohistochemical staining of paraffin-embedded Human spleen tissue within the normal limits using anti-AKAP12 mouse monoclonal antibody. (Heat-induced epitope retrieval by 1mM EDTA in 10mM Tris buffer (pH8.5) at 120°C for 3min, [TA811208]) (1:500)



Immunohistochemical staining of paraffin-embedded Human testicle tissue within the normal limits using anti-AKAP12 mouse monoclonal antibody. (Heat-induced epitope retrieval by 1mM EDTA in 10mM Tris buffer (pH8.5) at 120°C for 3min, [TA811208]) (1:500)