

Product datasheet for **TA811207AM**

E74 like factor 1 (ELF1) Mouse Monoclonal Antibody (Biotin conjugated) [Clone ID: OTI3G7]

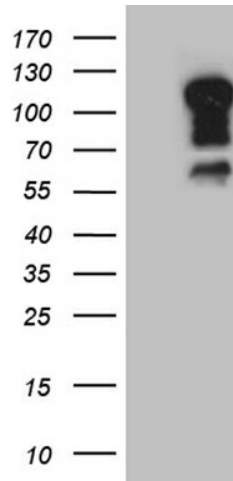
Product data:

Product Type:	Primary Antibodies
Clone Name:	OTI3G7
Applications:	WB
Recommended Dilution:	WB 1:2000
Reactivity:	Human, Mouse, Rat
Host:	Mouse
Isotype:	IgG1
Clonality:	Monoclonal
Immunogen:	Full length human recombinant protein of human ELF1 (NP_758961) produced in E.coli.
Formulation:	PBS (pH 7.3) containing 1% BSA, 50% glycerol and 0.02% sodium azide.
Concentration:	0.5 mg/ml
Purification:	Purified from mouse ascites fluids or tissue culture supernatant by affinity chromatography (protein A/G)
Conjugation:	Biotin
Storage:	Store at -20°C as received.
Stability:	Stable for 12 months from date of receipt.
Gene Name:	E74 like ETS transcription factor 1
Database Link:	NP_758961 Entrez Gene 13709 Mouse Entrez Gene 85424 Rat Entrez Gene 1997 Human P32519
Synonyms:	E74-like factor 1 (ets domain transcription factor); OTTHUMP00000018310
Protein Families:	Transcription Factors



[View online »](#)

Product images:



HEK293T cells were transfected with the pCMV6-ENTRY control (Left lane) or pCMV6-ENTRY ELF1 ([RC207140], Right lane) cDNA for 48 hrs and lysed. Equivalent amounts of cell lysates (5 ug per lane) were separated by SDS-PAGE and immunoblotted with anti-ELF1 (1:2000).