

## Product datasheet for **TA811205**

### Septin 3 (SEPT3) Mouse Monoclonal Antibody [Clone ID: OTI3F4]

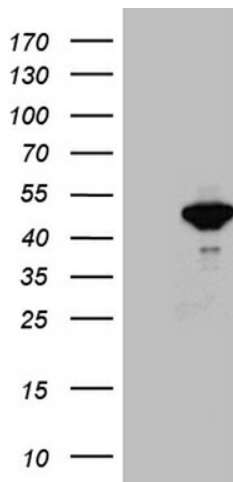
#### Product data:

Product Type:	Primary Antibodies
Clone Name:	OTI3F4
Applications:	IHC, WB
Recommended Dilution:	WB 1:500~2000, IHC 1:500
Reactivity:	Human, Mouse
Host:	Mouse
Isotype:	IgG2a
Clonality:	Monoclonal
Immunogen:	Full length human recombinant protein of human SEPT3 (NP_663786) produced in HEK293T cell.
Formulation:	PBS (pH 7.3) containing 1% BSA, 50% glycerol and 0.02% sodium azide.
Concentration:	1 mg/ml
Purification:	Purified from mouse ascites fluids or tissue culture supernatant by affinity chromatography (protein A/G)
Conjugation:	Unconjugated
Storage:	Store at -20°C as received.
Stability:	Stable for 12 months from date of receipt.
Predicted Protein Size:	40.5 kDa
Gene Name:	septin 3
Database Link:	<a href="#">NP_663786</a> <a href="#">Entrez Gene 24050 Mouse</a> <a href="#">Entrez Gene 55964 Human</a> <a href="#">Q9UH03</a>
Synonyms:	bK250D10.3; SEP3

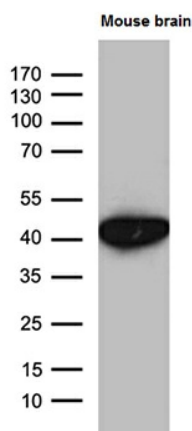


[View online »](#)

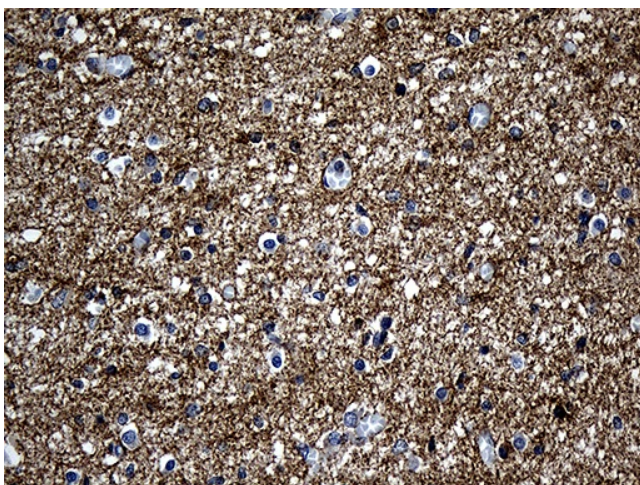
**Product images:**



HEK293T cells were transfected with the pCMV6-ENTRY control (Left lane) or pCMV6-ENTRY SEPT3 ([RC215771], Right lane) cDNA for 48 hrs and lysed. Equivalent amounts of cell lysates (5 ug per lane) were separated by SDS-PAGE and immunoblotted with anti-SEPT3 (1:2000). Positive lysates [LY403438] (100ug) and [LC403438] (20ug) can be purchased separately from OriGene.



Western blot analysis of extracts (35ug) from mouse brain tissue lysate by using anti-SEPT3 monoclonal antibody (1:500).



Immunohistochemical staining of paraffin-embedded Human embryonic cerebellum within the normal limits using anti-SEPT3 mouse monoclonal antibody. (Heat-induced epitope retrieval by 1mM EDTA in 10mM Tris buffer (pH8.5) at 120°C for 3min, TA811205) (1:500)