

## Product datasheet for **TA811203AM**

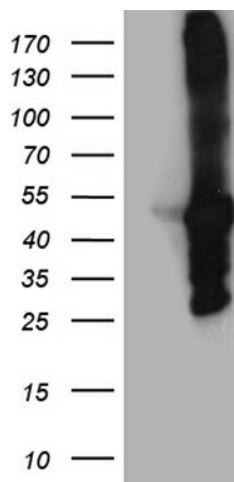
### MYBPC2 Mouse Monoclonal Antibody (Biotin conjugated) [Clone ID: OTI2E1]

#### Product data:

Product Type:	Primary Antibodies
Clone Name:	OTI2E1
Applications:	WB
Recommended Dilution:	WB 1:2000
Reactivity:	Human, Mouse, Rat
Host:	Mouse
Isotype:	IgG1
Clonality:	Monoclonal
Immunogen:	Full length human recombinant protein of human MYBPC2 (NP_004524) produced in HEK293T cell.
Formulation:	PBS (pH 7.3) containing 1% BSA, 50% glycerol and 0.02% sodium azide.
Concentration:	0.5 mg/ml
Purification:	Purified from mouse ascites fluids or tissue culture supernatant by affinity chromatography (protein A/G)
Conjugation:	Biotin
Storage:	Store at -20°C as received.
Stability:	Stable for 12 months from date of receipt.
Predicted Protein Size:	127.9 kDa
Gene Name:	myosin binding protein C, fast type
Database Link:	<a href="#">NP_004524</a> <a href="#">Entrez Gene 233199 Mouse</a> <a href="#">Entrez Gene 292879 Rat</a> <a href="#">Entrez Gene 4606 Human</a> <a href="#">Q14324</a>
Synonyms:	MYBPC; MYBPCF



[View online »](#)

**Product images:**

HEK293T cells were transfected with the pCMV6-ENTRY control (Cat# [PS100001], Left lane) or pCMV6-ENTRY MYBPC2 (Cat# [RC220058], Right lane) cDNA for 48 hrs and lysed. Equivalent amounts of cell lysates (5 ug per lane) were separated by SDS-PAGE and immunoblotted with anti-MYBPC2 (Cat# [TA811203])(1:2000). Positive lysates [LY417926] (100ug) and [LC417926] (20ug) can be purchased separately from OriGene.