

## Product datasheet for **TA811193AM**

### **AIF (AIFM1) Mouse Monoclonal Antibody (Biotin conjugated) [Clone ID: OTI5D2]**

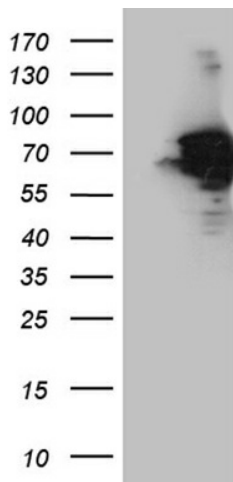
#### **Product data:**

<b>Product Type:</b>	Primary Antibodies
<b>Clone Name:</b>	OTI5D2
<b>Applications:</b>	IHC, WB
<b>Recommended Dilution:</b>	WB 1:500~2000, IHC 1:500
<b>Reactivity:</b>	Human, Mouse, Rat
<b>Host:</b>	Mouse
<b>Isotype:</b>	IgG2a
<b>Clonality:</b>	Monoclonal
<b>Immunogen:</b>	Human recombinant protein fragment corresponding to amino acids 134-483 of human AIFM1 (NP_001124318) produced in E.coli.
<b>Formulation:</b>	PBS (pH 7.3) containing 1% BSA, 50% glycerol and 0.02% sodium azide.
<b>Concentration:</b>	0.5 mg/ml
<b>Purification:</b>	Purified from mouse ascites fluids or tissue culture supernatant by affinity chromatography (protein A/G)
<b>Conjugation:</b>	Biotin
<b>Storage:</b>	Store at -20°C as received.
<b>Stability:</b>	Stable for 12 months from date of receipt.
<b>Gene Name:</b>	apoptosis inducing factor, mitochondria associated 1
<b>Database Link:</b>	<a href="#">NP_001124318</a> <a href="#">Entrez Gene 26926 Mouse</a> <a href="#">Entrez Gene 83533 Rat</a> <a href="#">Entrez Gene 9131 Human</a> <a href="#">O95831</a>
<b>Synonyms:</b>	AIF; CMT2D; CMTX4; COWCK; COXPD6; NADMR; NAMSD; PDCD8
<b>Protein Families:</b>	Druggable Genome, Transmembrane
<b>Protein Pathways:</b>	Apoptosis

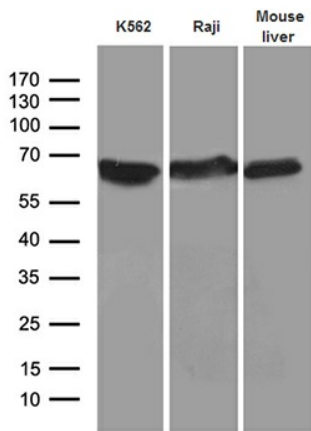


[View online »](#)

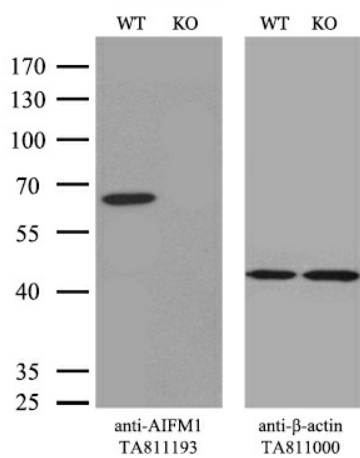
**Product images:**



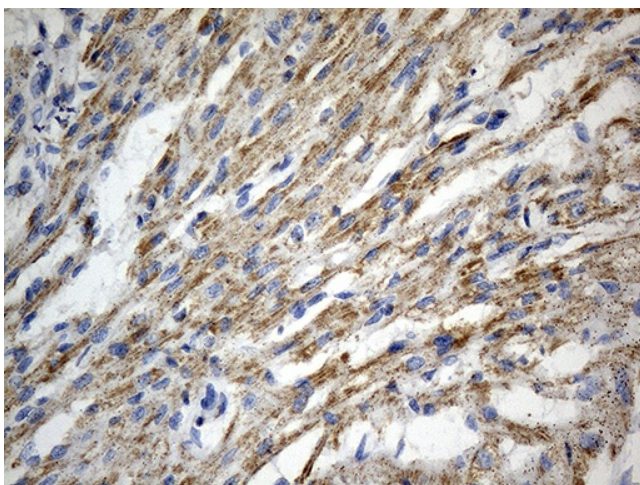
HEK293T cells were transfected with the pCMV6-ENTRY control (Left lane) or pCMV6-ENTRY AIFM1 ([RC225349], Right lane) cDNA for 48 hrs and lysed. Equivalent amounts of cell lysates (5 ug per lane) were separated by SDS-PAGE and immunoblotted with anti-AIFM1 (1:2000).



Western blot analysis of extracts (35ug) from 2 different cell lines and mouse liver tissue lysate by using anti-AIFM1 monoclonal antibody (1:500).



Equivalent amounts of cell lysates (10  $\mu$ g per lane) of wild-type 293T cells (WT, Cat# LC810293T) and AIFM1-Knockout 293T cells (KO, Cat# [LC811853]) were separated by SDS-PAGE and immunoblotted with anti-AIFM1 monoclonal antibody [TA811193], (1:500). Then the blotted membrane was stripped and reprobed with anti- $\beta$ -actin antibody ([TA811000]) as a loading control.



Immunohistochemical staining of paraffin-embedded human adult heart tissue within the normal limits using anti-AIFM1 mouse monoclonal antibody. (Heat-induced epitope retrieval by 1mM EDTA in 10mM Tris buffer (pH8.5) at 120°C for 3min, [TA811193]) (1:500)