

Product datasheet for **TA811192AM**

FE65 (APBB1) Mouse Monoclonal Antibody (Biotin conjugated) [Clone ID: OTI1G1]

Product data:

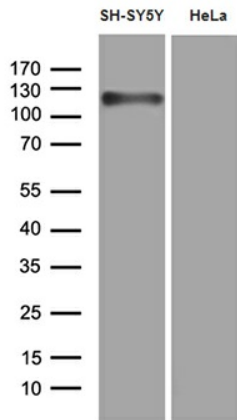
Product Type:	Primary Antibodies
Clone Name:	OTI1G1
Applications:	WB
Recommended Dilution:	WB 1:500~2000
Reactivity:	Human, Mouse, Rat
Host:	Mouse
Isotype:	IgG1
Clonality:	Monoclonal
Immunogen:	Full length human recombinant protein of human APBB1 (NP_001155) produced in HEK293T cell.
Formulation:	PBS (pH 7.3) containing 1% BSA, 50% glycerol and 0.02% sodium azide.
Concentration:	0.5 mg/ml
Purification:	Purified from mouse ascites fluids or tissue culture supernatant by affinity chromatography (protein A/G)
Conjugation:	Biotin
Storage:	Store at -20°C as received.
Stability:	Stable for 12 months from date of receipt.
Predicted Protein Size:	77.1 kDa
Gene Name:	amyloid beta precursor protein binding family B member 1
Database Link:	NP_001155 Entrez Gene 11785 Mouse Entrez Gene 29722 Rat Entrez Gene 322 Human O00213
Synonyms:	FE65; MGC:9072; RIR
Protein Families:	Transcription Factors
Protein Pathways:	Alzheimer's disease



[View online »](#)

Product images:


HEK293T cells were transfected with the pCMV6-ENTRY control (Left lane) or pCMV6-ENTRY APBB1 ([RC202003], Right lane) cDNA for 48 hrs and lysed. Equivalent amounts of cell lysates (5 ug per lane) were separated by SDS-PAGE and immunoblotted with anti-APBB1 (1:2000). Positive lysates [LY400467] (100ug) and [LC400467] (20ug) can be purchased separately from OriGene.



Western blot analysis of extracts (35ug) from 2 different cell lines by using anti-APBB1 monoclonal antibody (1:500).