

## Product datasheet for **TA811191AM**

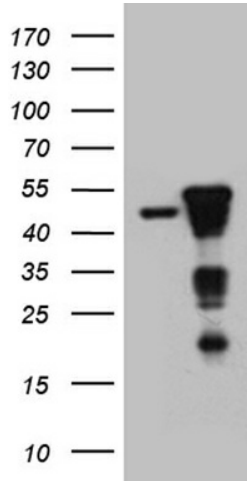
### SMAP2 Mouse Monoclonal Antibody (Biotin conjugated) [Clone ID: OTI9B6]

#### Product data:

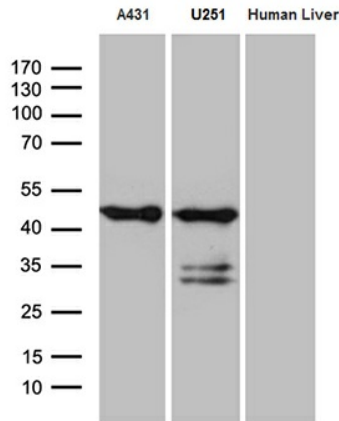
Product Type:	Primary Antibodies
Clone Name:	OTI9B6
Applications:	IHC, WB
Recommended Dilution:	WB 1:500~2000, IHC 1:500
Reactivity:	Human, Mouse, Rat
Host:	Mouse
Isotype:	IgG2a
Clonality:	Monoclonal
Immunogen:	Full length human recombinant protein of human SMAP2 (NP_073570) produced in E.coli.
Formulation:	PBS (pH 7.3) containing 1% BSA, 50% glycerol and 0.02% sodium azide.
Concentration:	0.5 mg/ml
Purification:	Purified from mouse ascites fluids or tissue culture supernatant by affinity chromatography (protein A/G)
Conjugation:	Biotin
Storage:	Store at -20°C as received.
Stability:	Stable for 12 months from date of receipt.
Gene Name:	small ArfGAP2
Database Link:	<a href="#">NP_073570</a> <a href="#">Entrez Gene 69780 Mouse</a> <a href="#">Entrez Gene 298500 Rat</a> <a href="#">Entrez Gene 64744 Human</a> <a href="#">Q8WU79</a>
Synonyms:	SMAP1L
Protein Pathways:	Endocytosis



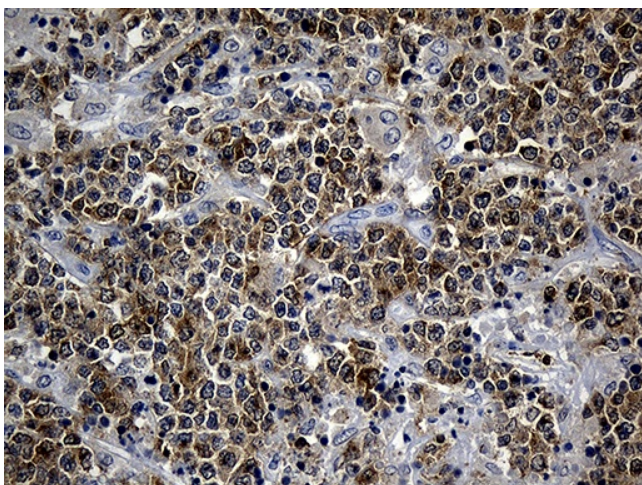
[View online »](#)

**Product images:**


HEK293T cells were transfected with the pCMV6-ENTRY control (Cat# [PS100001], Left lane) or pCMV6-ENTRY SMAP2 (Cat# [RC205875], Right lane) cDNA for 48 hrs and lysed. Equivalent amounts of cell lysates (5 ug per lane) were separated by SDS-PAGE and immunoblotted with anti-SMAP2 (Cat# [TA811191])(1:2000).



Western blot analysis of extracts (35ug) from 2 different cell lines and human liver tissue lysate by using anti-SMAP2 monoclonal antibody (1:500).



Immunohistochemical staining of paraffin-embedded Human lymphoma tissue using anti-SMAP2 mouse monoclonal antibody. (Heat-induced epitope retrieval by 1mM EDTA in 10mM Tris buffer (pH8.5) at 120°C for 3min, [TA811191]) (1:500)