

## Product datasheet for **TA811191**

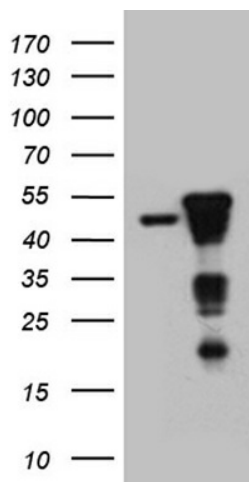
### SMAP2 Mouse Monoclonal Antibody [Clone ID: OTI9B6]

#### Product data:

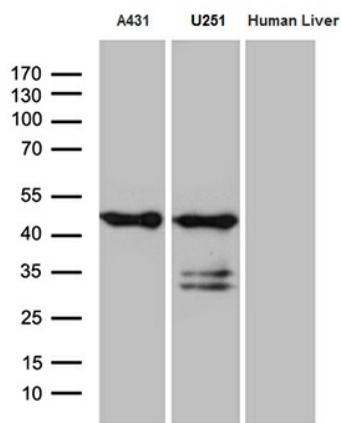
|                       |   |
|-----------------------|---|
| Product Type:         | Primary Antibodies  |
| Clone Name:           | OTI9B6  |
| Applications:         | IHC, WB   |
| Recommended Dilution: | WB 1:500~2000, IHC 1:500  |
| Reactivity:           | Human, Mouse, Rat   |
| Host:                 | Mouse   |
| Isotype:              | IgG2a   |
| Clonality:            | Monoclonal  |
| Immunogen:            | Full length human recombinant protein of human SMAP2 (NP_073570) produced in E.coli.  |
| Formulation:          | PBS (pH 7.3) containing 1% BSA, 50% glycerol and 0.02% sodium azide.  |
| Concentration:        | 1 mg/ml   |
| Purification:         | Purified from mouse ascites fluids or tissue culture supernatant by affinity chromatography (protein A/G)   |
| Conjugation:          | Unconjugated  |
| Storage:              | Store at -20°C as received.   |
| Stability:            | Stable for 12 months from date of receipt.  |
| Gene Name:            | small ArfGAP2   |
| Database Link:        | <a href="#">NP_073570</a><br><a href="#">Entrez Gene 69780 Mouse</a> <a href="#">Entrez Gene 298500 Rat</a> <a href="#">Entrez Gene 64744 Human</a><br><a href="#">Q8WU79</a> |
| Synonyms:             | SMAP1L  |
| Protein Pathways:     | Endocytosis   |



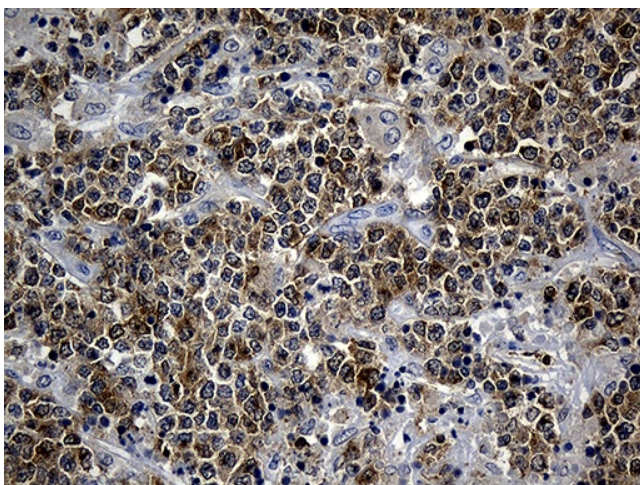
[View online »](#)

**Product images:**


HEK293T cells were transfected with the pCMV6-ENTRY control (Cat# [PS100001], Left lane) or pCMV6-ENTRY SMAP2 (Cat# [RC205875], Right lane) cDNA for 48 hrs and lysed. Equivalent amounts of cell lysates (5 ug per lane) were separated by SDS-PAGE and immunoblotted with anti-SMAP2 (Cat# TA811191)(1:2000).



Western blot analysis of extracts (35ug) from 2 different cell lines and human liver tissue lysate by using anti-SMAP2 monoclonal antibody (1:500).



Immunohistochemical staining of paraffin-embedded Human lymphoma tissue using anti-SMAP2 mouse monoclonal antibody. (Heat-induced epitope retrieval by 1mM EDTA in 10mM Tris buffer (pH8.5) at 120°C for 3min, TA811191) (1:500)