

Product datasheet for **TA811190S**

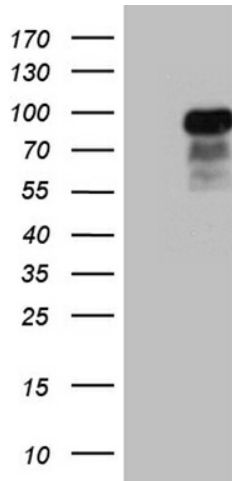
CCDC27 Mouse Monoclonal Antibody [Clone ID: OTI1F8]

Product data:

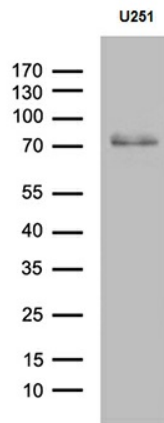
Product Type:	Primary Antibodies
Clone Name:	OTI1F8
Applications:	WB
Recommended Dilution:	WB 1:500~2000
Reactivity:	Human
Host:	Mouse
Isotype:	IgG2a
Clonality:	Monoclonal
Immunogen:	Full length human recombinant protein of human CCDC27 (NP_689705) produced in E.coli.
Formulation:	PBS (pH 7.3) containing 1% BSA, 50% glycerol and 0.02% sodium azide.
Concentration:	1 mg/ml
Purification:	Purified from mouse ascites fluids or tissue culture supernatant by affinity chromatography (protein A/G)
Conjugation:	Unconjugated
Storage:	Store at -20°C as received.
Stability:	Stable for 12 months from date of receipt.
Predicted Protein Size:	75.2 kDa
Gene Name:	coiled-coil domain containing 27
Database Link:	NP_689705 Entrez Gene 148870 Human Q2M243
Synonyms:	RP1-286D6.1



[View online »](#)

Product images:


HEK293T cells were transfected with the pCMV6-ENTRY control (Cat# [PS100001], Left lane) or pCMV6-ENTRY CCDC27 (Cat# [RC211330], Right lane) cDNA for 48 hrs and lysed. Equivalent amounts of cell lysates (5 ug per lane) were separated by SDS-PAGE and immunoblotted with anti-CCDC27 (Cat# [TA811190])(1:2000). Positive lysates [LY407499] (100ug) and [LC407499] (20ug) can be purchased separately from OriGene.



Western blot analysis of extracts (35ug) from U251 cell line by using anti-CCDC27 monoclonal antibody (1:500).