

Product datasheet for **TA811189AM**

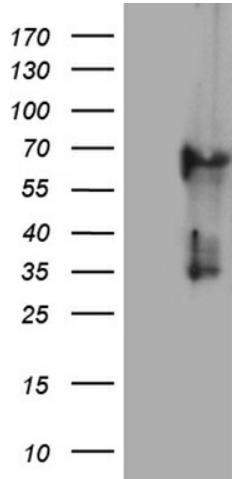
KRT84 Mouse Monoclonal Antibody (Biotin conjugated) [Clone ID: OTI2D1]

Product data:

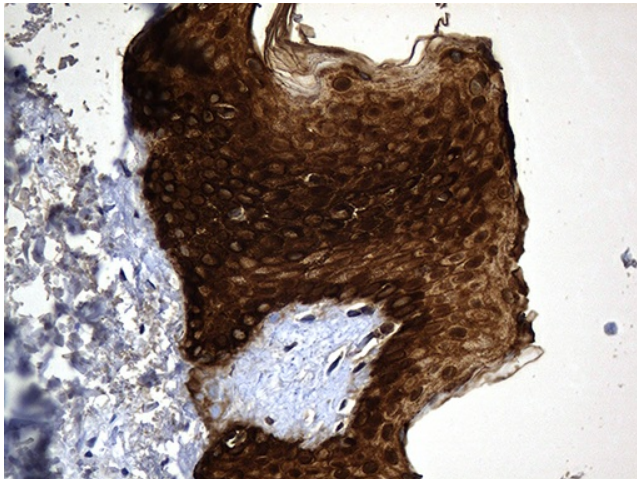
Product Type:	Primary Antibodies
Clone Name:	OTI2D1
Applications:	IHC, WB
Recommended Dilution:	IHC 1:500
Reactivity:	Human, Rat
Host:	Mouse
Isotype:	IgG1
Clonality:	Monoclonal
Immunogen:	Full length human recombinant protein of human KRT84 (NP_149034) produced in E.coli.
Formulation:	PBS (pH 7.3) containing 1% BSA, 50% glycerol and 0.02% sodium azide.
Concentration:	0.5 mg/ml
Purification:	Purified from mouse ascites fluids or tissue culture supernatant by affinity chromatography (protein A/G)
Conjugation:	Biotin
Storage:	Store at -20°C as received.
Stability:	Stable for 12 months from date of receipt.
Predicted Protein Size:	64.7 kDa
Gene Name:	keratin 84
Database Link:	NP_149034 Entrez Gene 315320 Rat Entrez Gene 3890 Human Q9NSB2
Synonyms:	HB4; KRTHB4



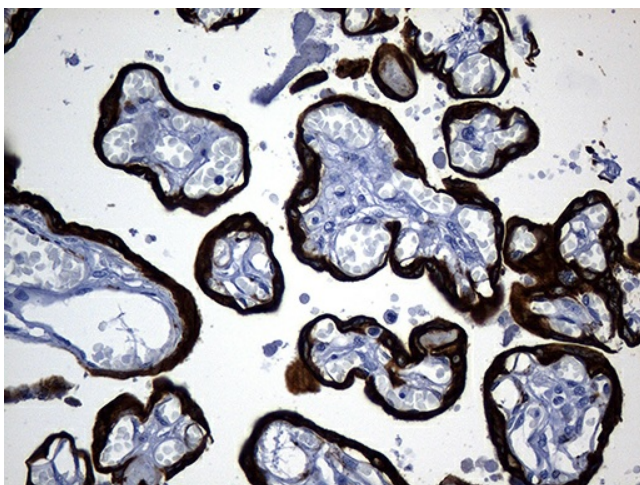
[View online »](#)

Product images:

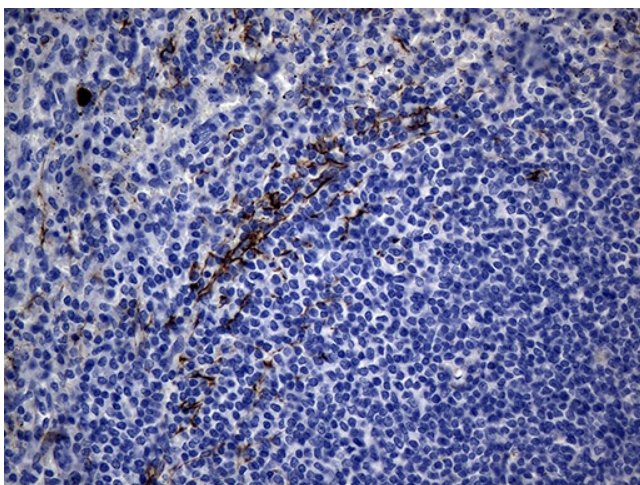
HEK293T cells were transfected with the pCMV6-ENTRY control (Cat# [PS100001], Left lane) or pCMV6-ENTRY KRT84 (Cat# [RC210207], Right lane) cDNA for 48 hrs and lysed. Equivalent amounts of cell lysates (5 ug per lane) were separated by SDS-PAGE and immunoblotted with anti-KRT84 (Cat# [TA811189])(1:500). Positive lysates [LY409754] (100ug) and [LC409754] (20ug) can be purchased separately from OriGene.



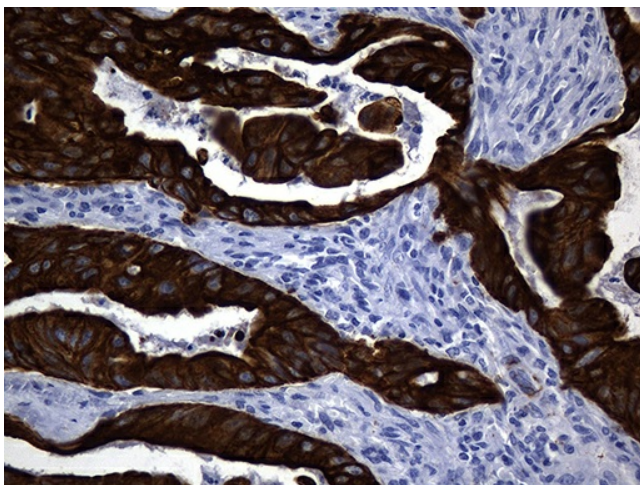
Immunohistochemical staining of paraffin-embedded Human skin tissue within the normal limits using anti-KRT84 mouse monoclonal antibody. (Heat-induced epitope retrieval by 1mM EDTA in 10mM Tris buffer (pH8.5) at 120°C for 3min, [TA811189]) (1:500)



Immunohistochemical staining of paraffin-embedded Human placenta tissue within the normal limits using anti-KRT84 mouse monoclonal antibody. (Heat-induced epitope retrieval by 1mM EDTA in 10mM Tris buffer (pH8.5) at 120°C for 3min, [TA811189]) (1:500)



Immunohistochemical staining of paraffin-embedded Human spleen tissue within the normal limits using anti-KRT84 mouse monoclonal antibody. (Heat-induced epitope retrieval by Tris-EDTA (1:500)



Immunohistochemical staining of paraffin-embedded Carcinoma of Human spleen tissue within the normal limits using anti-KRT84 mouse monoclonal antibody. (Heat-induced epitope retrieval by 1mM EDTA in 10mM Tris buffer (pH8.5) at 120°C for 3min, [TA811189]) (1:500).