

## Product datasheet for **TA811187**

### PPM1D Mouse Monoclonal Antibody [Clone ID: OTI3E1]

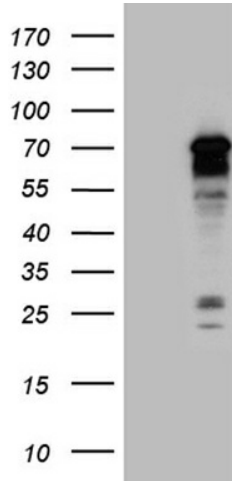
#### Product data:

Product Type:	Primary Antibodies
Clone Name:	OTI3E1
Applications:	WB
Recommended Dilution:	WB 1:500~2000
Reactivity:	Human, Mouse, Rat
Host:	Mouse
Isotype:	IgG1
Clonality:	Monoclonal
Immunogen:	Human recombinant protein fragment corresponding to amino acids 1-375 of human PPM1D (NP_003611) produced in E.coli.
Formulation:	PBS (pH 7.3) containing 1% BSA, 50% glycerol and 0.02% sodium azide.
Concentration:	1 mg/ml
Purification:	Purified from mouse ascites fluids or tissue culture supernatant by affinity chromatography (protein A/G)
Conjugation:	Unconjugated
Storage:	Store at -20°C as received.
Stability:	Stable for 12 months from date of receipt.
Predicted Protein Size:	66.5 kDa
Gene Name:	protein phosphatase, Mg <sup>2+</sup> /Mn <sup>2+</sup> dependent 1D
Database Link:	<a href="#">NP_003611</a> <a href="#">Entrez Gene 53892 Mouse</a> <a href="#">Entrez Gene 287585 Rat</a> <a href="#">Entrez Gene 8493 Human</a> <a href="#">O15297</a>
Synonyms:	PP2C-DELTA; WIP1
Protein Families:	Druggable Genome, Phosphatase
Protein Pathways:	p53 signaling pathway

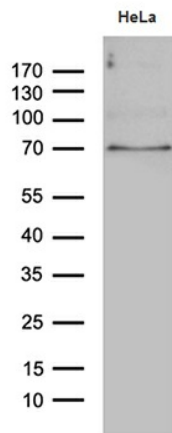


[View online »](#)

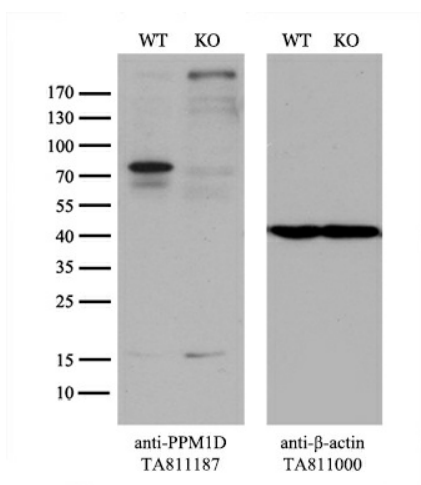
**Product images:**



HEK293T cells were transfected with the pCMV6-ENTRY control (Cat# [PS100001], Left lane) or pCMV6-ENTRY PPM1D (Cat# [RC209328], Right lane) cDNA for 48 hrs and lysed. Equivalent amounts of cell lysates (5 ug per lane) were separated by SDS-PAGE and immunoblotted with anti-PPM1D (Cat# TA811187)(1:2000). Positive lysates [LY418539] (100ug) and [LC418539] (20ug) can be purchased separately from OriGene.



Western blot analysis of extracts (35ug) from HELA cell lines by using anti-PPM1D monoclonal antibody (1:500).



Equivalent amounts of cell lysates (10  $\mu$ g per lane) of wild-type 293T cells (WT, Cat# LC810293T) and PPM1D-Knockout 293T cells (KO, Cat# [LC840309]) were separated by SDS-PAGE and immunoblotted with anti-PPM1D monoclonal antibody TA811187, (1:200). Then the blotted membrane was stripped and re probed with anti- $\beta$ -actin antibody ([TA811000]) as a loading control.