

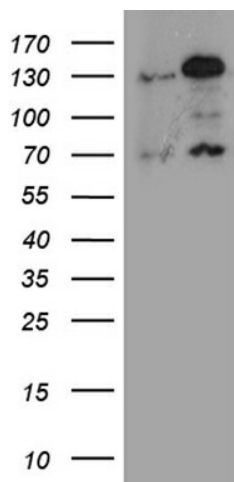
Product datasheet for **TA811186M**

RAD21 Mouse Monoclonal Antibody [Clone ID: OTI11F10]

Product data:

Product Type:	Primary Antibodies
Clone Name:	OTI11F10
Applications:	WB
Recommended Dilution:	WB 1:2000
Reactivity:	Human, Mouse, Rat
Host:	Mouse
Isotype:	IgG1
Clonality:	Monoclonal
Immunogen:	Human recombinant protein fragment corresponding to amino acids 193-458 of human RAD21 (NP_006256) produced in E.coli.
Formulation:	PBS (pH 7.3) containing 1% BSA, 50% glycerol and 0.02% sodium azide.
Concentration:	1 mg/ml
Purification:	Purified from mouse ascites fluids or tissue culture supernatant by affinity chromatography (protein A/G)
Conjugation:	Unconjugated
Storage:	Store at -20°C as received.
Stability:	Stable for 12 months from date of receipt.
Predicted Protein Size:	71.5 kDa
Gene Name:	RAD21 cohesin complex component
Database Link:	NP_006256 Entrez Gene 19357 Mouse Entrez Gene 314949 Rat Entrez Gene 5885 Human O60216
Synonyms:	CDLS4; hHR21; HR21; HRAD21; MCD1; NXP1; SCC1
Protein Families:	Druggable Genome
Protein Pathways:	Cell cycle


[View online »](#)

Product images:


HEK293T cells were transfected with the pCMV6-ENTRY control (Left lane) or pCMV6-ENTRY RAD21 ([RC208262], Right lane) cDNA for 48 hrs and lysed. Equivalent amounts of cell lysates (5 ug per lane) were separated by SDS-PAGE and immunoblotted with anti-RAD21 (1:2000). Positive lysates [LY401887] (100ug) and [LC401887] (20ug) can be purchased separately from OriGene.