

## Product datasheet for **TA811181AM**

### **MSL2L1 (MSL2) Mouse Monoclonal Antibody (Biotin conjugated) [Clone ID: OTI4G7]**

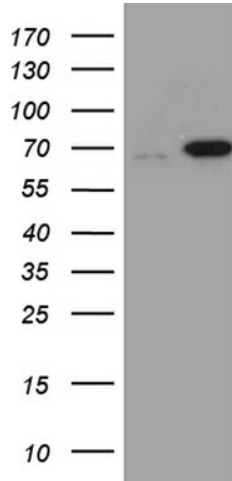
#### **Product data:**

Product Type:	Primary Antibodies
Clone Name:	OTI4G7
Applications:	WB
Recommended Dilution:	WB 1:500~2000
Reactivity:	Human, Mouse, Rat
Host:	Mouse
Isotype:	IgG2a
Clonality:	Monoclonal
Immunogen:	Full length human recombinant protein of human MSL2 (NP_060603) produced in E.coli.
Formulation:	PBS (pH 7.3) containing 1% BSA, 50% glycerol and 0.02% sodium azide.
Concentration:	0.5 mg/ml
Purification:	Purified from mouse ascites fluids or tissue culture supernatant by affinity chromatography (protein A/G)
Conjugation:	Biotin
Storage:	Store at -20°C as received.
Stability:	Stable for 12 months from date of receipt.
Predicted Protein Size:	62.4 kDa
Gene Name:	male-specific lethal 2 homolog (Drosophila)
Database Link:	<a href="#">NP_060603</a> <a href="#">Entrez Gene 55167 Human</a> <a href="#">Q9HCI7</a>
Synonyms:	MSL-2; MSL2L1; RNF184
Protein Families:	Druggable Genome

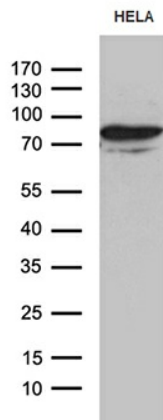


[View online »](#)

**Product images:**



HEK293T cells were transfected with the pCMV6-ENTRY control (Cat# [PS100001], Left lane) or pCMV6-ENTRY MSL2 (Cat# [RC210829], Right lane) cDNA for 48 hrs and lysed. Equivalent amounts of cell lysates (5 ug per lane) were separated by SDS-PAGE and immunoblotted with anti-MSL2 (Cat# [TA811181])(1:2000). Positive lysates [LY413286] (100ug) and [LC413286] (20ug) can be purchased separately from OriGene.



Western blot analysis of extracts (35ug) from HELA cell line by using anti-MSL2 monoclonal antibody (1:500).