

## Product datasheet for **TA811178**

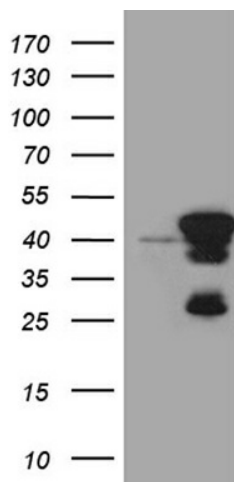
### SMAP2 Mouse Monoclonal Antibody [Clone ID: OTI6E11]

#### Product data:

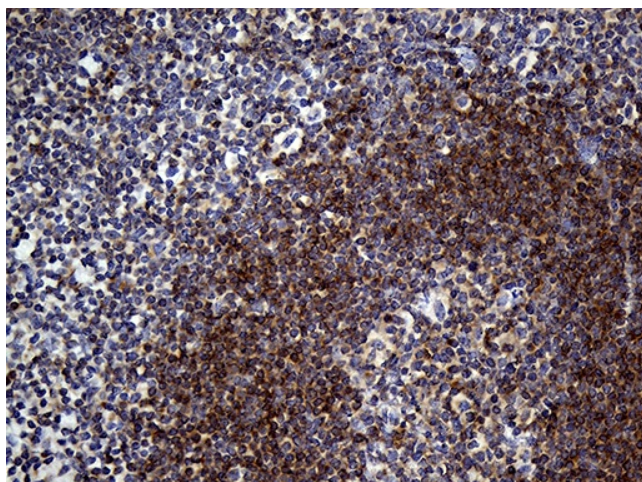
Product Type:	Primary Antibodies
Clone Name:	OTI6E11
Applications:	IHC, WB
Recommended Dilution:	WB 1:2000, IHC 1:500
Reactivity:	Human, Mouse, Rat
Host:	Mouse
Isotype:	IgG1
Clonality:	Monoclonal
Immunogen:	Full length human recombinant protein of human SMAP2 (NP_073570) produced in E.coli.
Formulation:	PBS (pH 7.3) containing 1% BSA, 50% glycerol and 0.02% sodium azide.
Concentration:	1 mg/ml
Purification:	Purified from mouse ascites fluids or tissue culture supernatant by affinity chromatography (protein A/G)
Conjugation:	Unconjugated
Storage:	Store at -20°C as received.
Stability:	Stable for 12 months from date of receipt.
Gene Name:	small ArfGAP2
Database Link:	<a href="#">NP_073570</a> <a href="#">Entrez Gene 69780 Mouse</a> <a href="#">Entrez Gene 298500 Rat</a> <a href="#">Entrez Gene 64744 Human</a> <a href="#">Q8WU79</a>
Synonyms:	SMAP1L
Protein Pathways:	Endocytosis



[View online »](#)

**Product images:**

HEK293T cells were transfected with the pCMV6-ENTRY control (Left lane) or pCMV6-ENTRY SMAP2 ([RC205875], Right lane) cDNA for 48 hrs and lysed. Equivalent amounts of cell lysates (5 ug per lane) were separated by SDS-PAGE and immunoblotted with anti-SMAP2 (1:2000).



Immunohistochemical staining of paraffin-embedded Human tonsil within the normal limits using anti-SMAP2 mouse monoclonal antibody. (Heat-induced epitope retrieval by 1mM EDTA in 10mM Tris buffer (pH8.5) at 120°C for 3min, TA811178) (1:500)