

## Product datasheet for **TA811172AM**

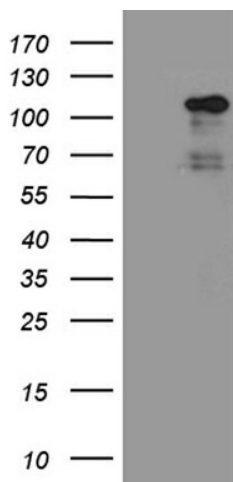
### AGO1 Mouse Monoclonal Antibody (Biotin conjugated) [Clone ID: OTI3F5]

#### Product data:

Product Type:	Primary Antibodies
Clone Name:	OTI3F5
Applications:	WB
Recommended Dilution:	WB 1:500
Reactivity:	Human, Mouse, Rat
Host:	Mouse
Isotype:	IgG1
Clonality:	Monoclonal
Immunogen:	Human recombinant protein fragment corresponding to amino acids 226-490 of human EIF2C1 (NP_036331) produced in E.coli.
Formulation:	PBS (pH 7.3) containing 1% BSA, 50% glycerol and 0.02% sodium azide.
Concentration:	0.5 mg/ml
Purification:	Purified from mouse ascites fluids or tissue culture supernatant by affinity chromatography (protein A/G)
Conjugation:	Biotin
Storage:	Store at -20°C as received.
Stability:	Stable for 12 months from date of receipt.
Predicted Protein Size:	97 kDa
Gene Name:	argonaute 1, RISC catalytic component
Database Link:	<a href="#">NP_036331</a> <a href="#">Entrez Gene 236511</a> <a href="#">MouseEntrez Gene 313594</a> <a href="#">RatEntrez Gene 26523</a> <a href="#">Human Q9UL18</a>
Synonyms:	EIF2C; EIF2C1; GERP95; Q99
Protein Families:	Druggable Genome



[View online »](#)

**Product images:**

HEK293T cells were transfected with the pCMV6-ENTRY control (Left lane) or pCMV6-ENTRY EIF2C1 ([RC209163], Right lane) cDNA for 48 hrs and lysed. Equivalent amounts of cell lysates (5 ug per lane) were separated by SDS-PAGE and immunoblotted with anti-EIF2C1 (1:500). Positive lysates [LY402163] (100ug) and [LC402163] (20ug) can be purchased separately from OriGene.