

## Product datasheet for **TA811169S**

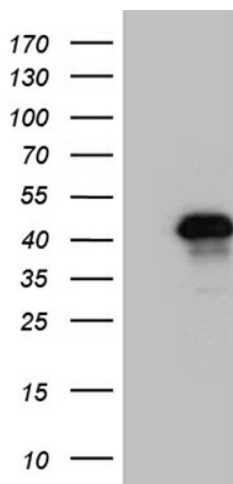
### ZNF558 Mouse Monoclonal Antibody [Clone ID: OTI2C4]

#### Product data:

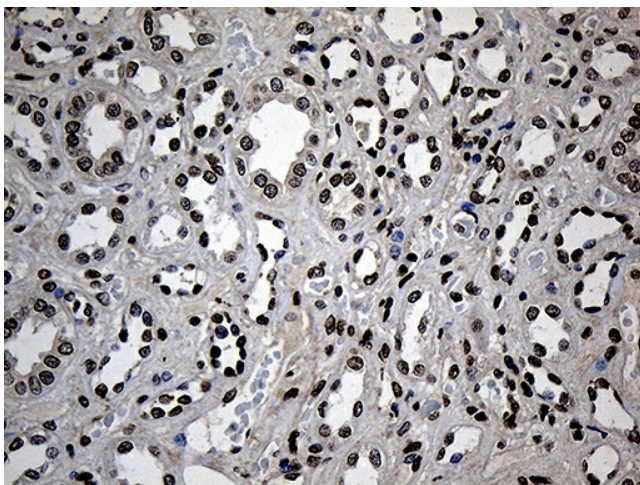
Product Type:	Primary Antibodies
Clone Name:	OTI2C4
Applications:	IHC, WB
Recommended Dilution:	WB 1:2000, IHC 1:150
Reactivity:	Human
Host:	Mouse
Isotype:	IgG2b
Clonality:	Monoclonal
Immunogen:	Full length human recombinant protein of human ZNF558 (NP_653294) produced in E.coli.
Formulation:	PBS (pH 7.3) containing 1% BSA, 50% glycerol and 0.02% sodium azide.
Concentration:	1 mg/ml
Purification:	Purified from mouse ascites fluids or tissue culture supernatant by affinity chromatography (protein A/G)
Conjugation:	Unconjugated
Storage:	Store at -20°C as received.
Stability:	Stable for 12 months from date of receipt.
Predicted Protein Size:	45.6 kDa
Gene Name:	zinc finger protein 558
Database Link:	<a href="#">NP_653294</a> <a href="#">Entrez Gene 148156 Human</a> <a href="#">Q96NG5</a>
Synonyms:	FLJ30932
Protein Families:	Transcription Factors



[View online »](#)

**Product images:**

HEK293T cells were transfected with the pCMV6-ENTRY control (Cat# [PS100001], Left lane) or pCMV6-ENTRY ZNF558 (Cat# [RC209013], Right lane) cDNA for 48 hrs and lysed. Equivalent amounts of cell lysates (5 ug per lane) were separated by SDS-PAGE and immunoblotted with anti-ZNF558 (Cat# [TA811169])(1:2000). Positive lysates [LY403403] (100ug) and [LC403403] (20ug) can be purchased separately from OriGene.



Immunohistochemical staining of paraffin-embedded Human Kidney tissue within the normal limits using anti-ZNF558 mouse monoclonal antibody. (Heat-induced epitope retrieval by 1mM EDTA in 10mM Tris buffer (pH8.5) at 120°C for 3min, [TA811169]) (1:150)