

## Product datasheet for **TA811166M**

### Cyclin (CCNI) Mouse Monoclonal Antibody [Clone ID: OTI4D10]

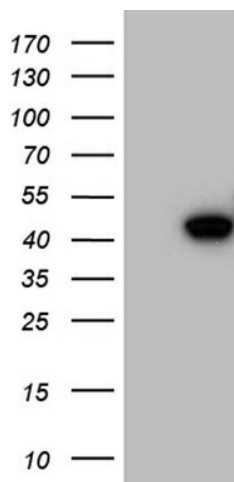
#### Product data:

Product Type:	Primary Antibodies
Clone Name:	OTI4D10
Applications:	WB
Recommended Dilution:	WB 1:2000
Reactivity:	Human, Mouse, Rat
Host:	Mouse
Isotype:	IgG1
Clonality:	Monoclonal
Immunogen:	Human recombinant protein fragment corresponding to amino acids 114-377 of human CCNI (NP_006826) produced in E.coli.
Formulation:	PBS (pH 7.3) containing 1% BSA, 50% glycerol and 0.02% sodium azide.
Concentration:	1 mg/ml
Purification:	Purified from mouse ascites fluids or tissue culture supernatant by affinity chromatography (protein A/G)
Conjugation:	Unconjugated
Storage:	Store at -20°C as received.
Stability:	Stable for 12 months from date of receipt.
Predicted Protein Size:	42.4 kDa
Gene Name:	cyclin I
Database Link:	<a href="#">NP_006826</a> <a href="#">Entrez Gene 12453 Mouse</a> <a href="#">Entrez Gene 289500 Rat</a> <a href="#">Entrez Gene 10983 Human</a> <a href="#">Q14094</a>
Synonyms:	CCNI1; CYC1; CYI



[View online »](#)

## Product images:



HEK293T cells were transfected with the pCMV6-ENTRY control (Left lane) or pCMV6-ENTRY CCNI ([RC201186], Right lane) cDNA for 48 hrs and lysed. Equivalent amounts of cell lysates (5 ug per lane) were separated by SDS-PAGE and immunoblotted with anti-CCNI (1:2000). Positive lysates [LY416390] (100ug) and [LC416390] (20ug) can be purchased separately from OriGene.