

Product datasheet for **TA811165AM**

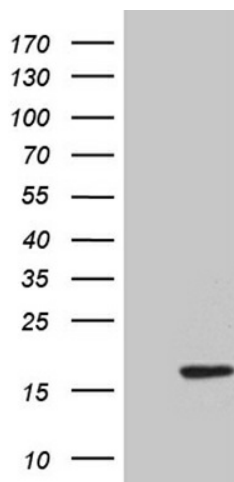
HHLA3 Mouse Monoclonal Antibody (Biotin conjugated) [Clone ID: OTI5D12]

Product data:

Product Type:	Primary Antibodies
Clone Name:	OTI5D12
Applications:	WB
Recommended Dilution:	WB 1:500
Reactivity:	Human
Host:	Mouse
Isotype:	IgG1
Clonality:	Monoclonal
Immunogen:	Full length human recombinant protein of human HHLA3 (NP_001026863) produced in E.coli.
Formulation:	PBS (pH 7.3) containing 1% BSA, 50% glycerol and 0.02% sodium azide.
Concentration:	0.5 mg/ml
Purification:	Purified from mouse ascites fluids or tissue culture supernatant by affinity chromatography (protein A/G)
Conjugation:	Biotin
Storage:	Store at -20°C as received.
Stability:	Stable for 12 months from date of receipt.
Predicted Protein Size:	13.3 kDa
Gene Name:	HERV-H LTR-associating 3
Database Link:	NP_001026863 Entrez Gene 11147 Human Q9XRX5
Synonyms:	HERV-H LTR-associating 3; human endogenous retrovirus-H long terminal repeat-associating 3; OTTHUMP00000010943



[View online »](#)

Product images:

HEK293T cells were transfected with the pCMV6-ENTRY control (Left lane) or pCMV6-ENTRY HHLA3 ([RC213042], Right lane) cDNA for 48 hrs and lysed. Equivalent amounts of cell lysates (5 ug per lane) were separated by SDS-PAGE and immunoblotted with anti-HHLA3 (1:500). Positive lysates [LY421904] (100ug) and [LC421904] (20ug) can be purchased separately from OriGene.