

Product datasheet for **TA811163M**

PPM1D Mouse Monoclonal Antibody [Clone ID: OTI4H3]

Product data:

Product Type:	Primary Antibodies
Clone Name:	OTI4H3
Applications:	WB
Recommended Dilution:	WB 1:500~2000
Reactivity:	Human, Mouse, Rat
Host:	Mouse
Isotype:	IgG1
Clonality:	Monoclonal
Immunogen:	Human recombinant protein fragment corresponding to amino acids 1-375 of human PPM1D (NP_003611) produced in E.coli.
Formulation:	PBS (pH 7.3) containing 1% BSA, 50% glycerol and 0.02% sodium azide.
Concentration:	1 mg/ml
Purification:	Purified from mouse ascites fluids or tissue culture supernatant by affinity chromatography (protein A/G)
Conjugation:	Unconjugated
Storage:	Store at -20°C as received.
Stability:	Stable for 12 months from date of receipt.
Predicted Protein Size:	66.5 kDa
Gene Name:	protein phosphatase, Mg ²⁺ /Mn ²⁺ dependent 1D
Database Link:	NP_003611 Entrez Gene 53892 Mouse Entrez Gene 287585 Rat Entrez Gene 8493 Human O15297
Synonyms:	PP2C-DELTA; WIP1
Protein Families:	Druggable Genome, Phosphatase
Protein Pathways:	p53 signaling pathway


[View online »](#)

Product images:

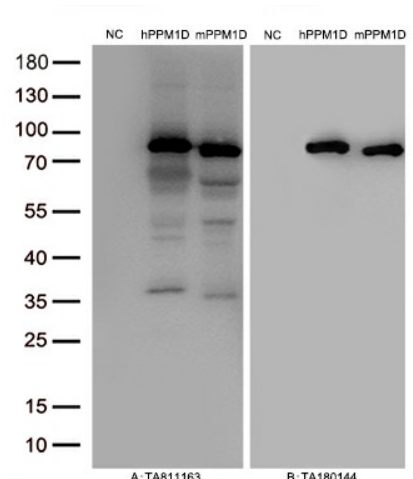
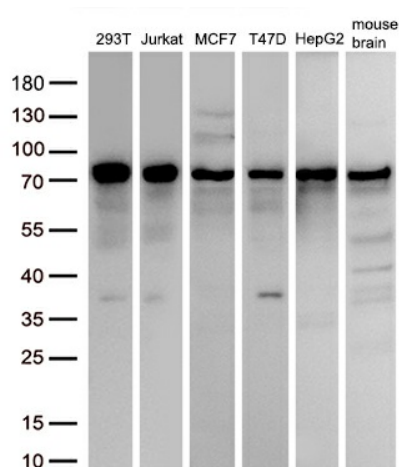
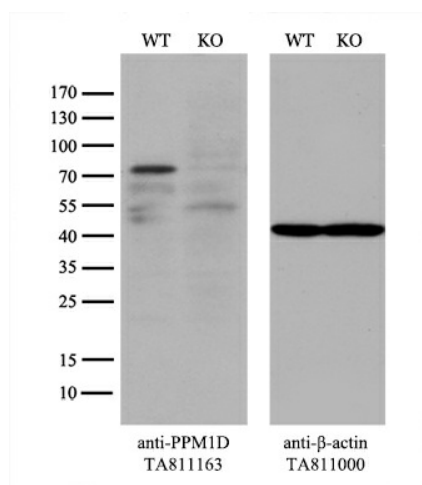


Figure A, Western blot analysis of overexpressed lysates (15ug per lane) from HEK293T cells transfected with empty plasmid ([PS100001], NC), human PPM1D plasmid ([RC209328], hPPM1D), mouse PPM1D plasmid ([MR209279], mPPM1D) using anti-PPM1D antibody [TA811163] (1:5000@1mg/ml). Figure B, Western blot analysis of the same samples as Figure A with anti-DDK antibody ([TA180144], 1:5000@1mg/ml).



Western blot analysis of extracts (50ug per lane) from 5 different cell lines and 1 tissue lysates by using anti-PPM1D antibody ([TA811163], 1:2000@1mg/ml).



Equivalent amounts of cell lysates (10 ug per lane) of wild-type 293T cells (WT, Cat# LC810293T) and PPM1D-Knockout 293T cells (KO, Cat# [LC840309]) were separated by SDS-PAGE and immunoblotted with anti-PPM1D monoclonal antibody [TA811163], (1:500). Then the blotted membrane was stripped and reprobed with anti-β-actin antibody ([TA811000]) as a loading control.