

Product datasheet for **TA811163AM**

PPM1D Mouse Monoclonal Antibody (Biotin conjugated) [Clone ID: OTI4H3]

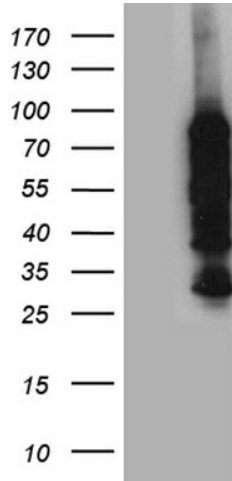
Product data:

| | |
|-------------------------|--|
| Product Type: | Primary Antibodies |
| Clone Name: | OTI4H3 |
| Applications: | WB |
| Recommended Dilution: | WB 1:500~2000 |
| Reactivity: | Human, Mouse, Rat |
| Host: | Mouse |
| Isotype: | IgG1 |
| Clonality: | Monoclonal |
| Immunogen: | Human recombinant protein fragment corresponding to amino acids 1-375 of human PPM1D (NP_003611) produced in E.coli. |
| Formulation: | PBS (pH 7.3) containing 1% BSA, 50% glycerol and 0.02% sodium azide. |
| Concentration: | 0.5 mg/ml |
| Purification: | Purified from mouse ascites fluids or tissue culture supernatant by affinity chromatography (protein A/G) |
| Conjugation: | Biotin |
| Storage: | Store at -20°C as received. |
| Stability: | Stable for 12 months from date of receipt. |
| Predicted Protein Size: | 66.5 kDa |
| Gene Name: | protein phosphatase, Mg ²⁺ /Mn ²⁺ dependent 1D |
| Database Link: | NP_003611 Entrez Gene 53892 Mouse Entrez Gene 287585 Rat Entrez Gene 8493 Human O15297 |
| Synonyms: | PP2C-DELTA; WIP1 |
| Protein Families: | Druggable Genome, Phosphatase |
| Protein Pathways: | p53 signaling pathway |

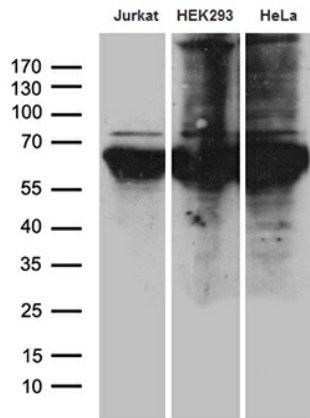


[View online »](#)

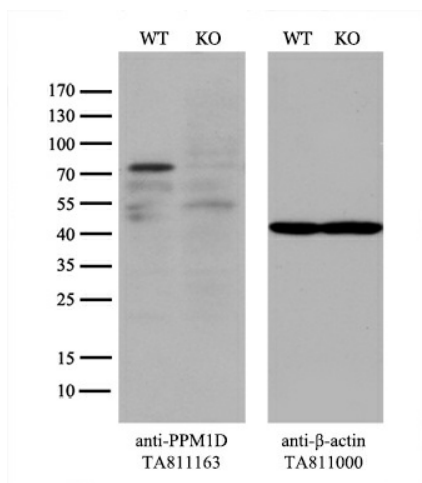
Product images:



HEK293T cells were transfected with the pCMV6-ENTRY control (Left lane) or pCMV6-ENTRY PPM1D ([RC209328], Right lane) cDNA for 48 hrs and lysed. Equivalent amounts of cell lysates (5 ug per lane) were separated by SDS-PAGE and immunoblotted with anti-PPM1D (1:2000). Positive lysates [LY418539] (100ug) and [LC418539] (20ug) can be purchased separately from OriGene.



Western blot analysis of extracts (35ug) from 3 different cell lines by using anti-PPM1D monoclonal antibody (1:500).



Equivalent amounts of cell lysates (10 ug per lane) of wild-type 293T cells (WT, Cat# LC810293T) and PPM1D-Knockout 293T cells (KO, Cat# [LC840309]) were separated by SDS-PAGE and immunoblotted with anti-PPM1D monoclonal antibody [TA811163], (1:500). Then the blotted membrane was stripped and reprobred with anti- β -actin antibody ([TA811000]) as a loading control.