

## Product datasheet for **TA811160**

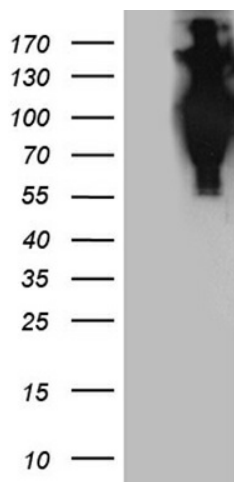
### FE65 (APBB1) Mouse Monoclonal Antibody [Clone ID: OTI7E3]

#### Product data:

Product Type:	Primary Antibodies
Clone Name:	OTI7E3
Applications:	WB
Recommended Dilution:	WB 1:2000
Reactivity:	Human, Mouse, Rat
Host:	Mouse
Isotype:	IgG1
Clonality:	Monoclonal
Immunogen:	Full length human recombinant protein of human APBB1 (NP_001155) produced in HEK293T cell.
Formulation:	PBS (pH 7.3) containing 1% BSA, 50% glycerol and 0.02% sodium azide.
Concentration:	1 mg/ml
Purification:	Purified from mouse ascites fluids or tissue culture supernatant by affinity chromatography (protein A/G)
Conjugation:	Unconjugated
Storage:	Store at -20°C as received.
Stability:	Stable for 12 months from date of receipt.
Predicted Protein Size:	77.1 kDa
Gene Name:	amyloid beta precursor protein binding family B member 1
Database Link:	<a href="#">NP_001155</a> <a href="#">Entrez Gene 11785 Mouse</a> <a href="#">Entrez Gene 29722 Rat</a> <a href="#">Entrez Gene 322 Human</a> <a href="#">O00213</a>
Synonyms:	FE65; MGC:9072; RIR
Protein Families:	Transcription Factors
Protein Pathways:	Alzheimer's disease



[View online »](#)

**Product images:**

HEK293T cells were transfected with the pCMV6-ENTRY control (Left lane) or pCMV6-ENTRY APBB1 ([RC202003], Right lane) cDNA for 48 hrs and lysed. Equivalent amounts of cell lysates (5 ug per lane) were separated by SDS-PAGE and immunoblotted with anti-APBB1 (1:2000). Positive lysates [LY400467] (100ug) and [LC400467] (20ug) can be purchased separately from OriGene.