

## Product datasheet for **TA811158M**

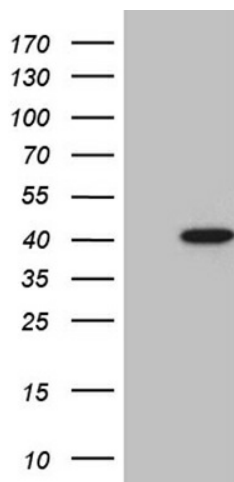
### **RNF41 Mouse Monoclonal Antibody [Clone ID: OTI2C1]**

#### **Product data:**

Product Type:	Primary Antibodies
Clone Name:	OTI2C1
Applications:	WB
Recommended Dilution:	WB 1:2000
Reactivity:	Human, Mouse, Rat
Host:	Mouse
Isotype:	IgG1
Clonality:	Monoclonal
Immunogen:	Full length human recombinant protein of human RNF41 (NP_919340) produced in E.coli.
Formulation:	PBS (pH 7.3) containing 1% BSA, 50% glycerol and 0.02% sodium azide.
Concentration:	1 mg/ml
Purification:	Purified from mouse ascites fluids or tissue culture supernatant by affinity chromatography (protein A/G)
Conjugation:	Unconjugated
Storage:	Store at -20°C as received.
Stability:	Stable for 12 months from date of receipt.
Predicted Protein Size:	35.7 kDa
Gene Name:	ring finger protein 41
Database Link:	<a href="#">NP_919340</a> <a href="#">Entrez Gene 67588 Mouse</a> <a href="#">Entrez Gene 362814 Rat</a> <a href="#">Entrez Gene 10193 Human</a> <a href="#">Q9H4P4</a>
Synonyms:	FLRF; NRDP1; SBB103
Protein Pathways:	Endocytosis



[View online »](#)

**Product images:**


HEK293T cells were transfected with the pCMV6-ENTRY control (Cat# [PS100001], Left lane) or pCMV6-ENTRY RNF41 (Cat# [RC212145], Right lane) cDNA for 48 hrs and lysed. Equivalent amounts of cell lysates (5 ug per lane) were separated by SDS-PAGE and immunoblotted with anti-RNF41 (Cat# [TA811158])(1:2000). Positive lysates [LY430682] (100ug) and [LC430682] (20ug) can be purchased separately from OriGene.