

Product datasheet for **TA811155AM**

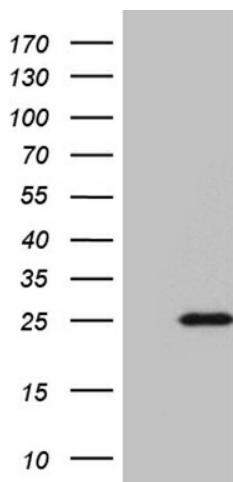
BEX2 Mouse Monoclonal Antibody (Biotin conjugated) [Clone ID: OTI1H3]

Product data:

Product Type:	Primary Antibodies
Clone Name:	OTI1H3
Applications:	WB
Recommended Dilution:	WB 1:2000
Reactivity:	Human
Host:	Mouse
Isotype:	IgG1
Clonality:	Monoclonal
Immunogen:	Full length human recombinant protein of human BEX2 (NP_116010) produced in E.coli.
Formulation:	PBS (pH 7.3) containing 1% BSA, 50% glycerol and 0.02% sodium azide.
Concentration:	0.5 mg/ml
Purification:	Purified from mouse ascites fluids or tissue culture supernatant by affinity chromatography (protein A/G)
Conjugation:	Biotin
Storage:	Store at -20°C as received.
Stability:	Stable for 12 months from date of receipt.
Predicted Protein Size:	15.1 kDa
Gene Name:	brain expressed X-linked 2
Database Link:	NP_116010 Entrez Gene 84707 Human Q9BXY8
Synonyms:	BEX1; DJ79P11.1



[View online »](#)

Product images:

HEK293T cells were transfected with the pCMV6-ENTRY control (Cat# [PS100001], Left lane) or pCMV6-ENTRY BEX2 (Cat# [RC202129], Right lane) cDNA for 48 hrs and lysed. Equivalent amounts of cell lysates (5 ug per lane) were separated by SDS-PAGE and immunoblotted with anti-BEX2 (Cat# [TA811155])(1:2000). Positive lysates [LY410008] (100ug) and [LC410008] (20ug) can be purchased separately from OriGene.