

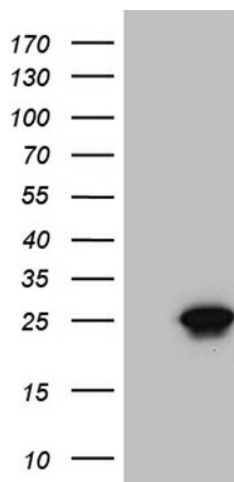
Product datasheet for TA811149M

CIB1 Mouse Monoclonal Antibody [Clone ID: OTI1D7]

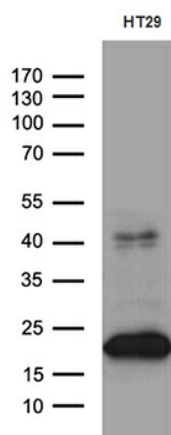
Product data:

| | |
|-------------------------|--|
| Product Type: | Primary Antibodies |
| Clone Name: | OTI1D7 |
| Applications: | WB |
| Recommended Dilution: | WB 1:500~2000 |
| Reactivity: | Human, Mouse, Rat |
| Host: | Mouse |
| Isotype: | IgG1 |
| Clonality: | Monoclonal |
| Immunogen: | Human recombinant protein fragment corresponding to amino acids 2-191 of human CIB1 (NP_006375) produced in E.coli. |
| Formulation: | PBS (pH 7.3) containing 1% BSA, 50% glycerol and 0.02% sodium azide. |
| Concentration: | 1 mg/ml |
| Purification: | Purified from mouse ascites fluids or tissue culture supernatant by affinity chromatography (protein A/G) |
| Conjugation: | Unconjugated |
| Storage: | Store at -20°C as received. |
| Stability: | Stable for 12 months from date of receipt. |
| Predicted Protein Size: | 21.5 kDa |
| Gene Name: | calcium and integrin binding 1 |
| Database Link: | NP_006375 Entrez Gene 23991 Mouse Entrez Gene 81823 Rat Entrez Gene 10519 Human Q99828 |
| Synonyms: | CIB; CIBP; KIP1; PRKDCIP; SIP2-28 |


[View online »](#)

Product images:


HEK293T cells were transfected with the pCMV6-ENTRY control (Left lane) or pCMV6-ENTRY CIB1 ([RC201591], Right lane) cDNA for 48 hrs and lysed. Equivalent amounts of cell lysates (5 ug per lane) were separated by SDS-PAGE and immunoblotted with anti-CIB1 (1:2000). Positive lysates [LY401918] (100ug) and [LC401918] (20ug) can be purchased separately from OriGene.



Western blot analysis of extracts (35ug) from HT29 cell line by using anti-CIB1 monoclonal antibody (1:500).