

Product datasheet for **TA811149**

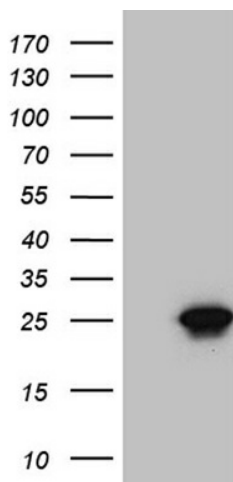
CIB1 Mouse Monoclonal Antibody [Clone ID: OTI1D7]

Product data:

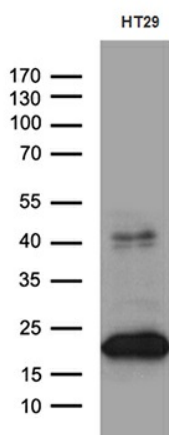
Product Type:	Primary Antibodies
Clone Name:	OTI1D7
Applications:	WB
Recommended Dilution:	WB 1:500~2000
Reactivity:	Human, Mouse, Rat
Host:	Mouse
Isotype:	IgG1
Clonality:	Monoclonal
Immunogen:	Human recombinant protein fragment corresponding to amino acids 2-191 of human CIB1 (NP_006375) produced in E.coli.
Formulation:	PBS (pH 7.3) containing 1% BSA, 50% glycerol and 0.02% sodium azide.
Concentration:	1 mg/ml
Purification:	Purified from mouse ascites fluids or tissue culture supernatant by affinity chromatography (protein A/G)
Conjugation:	Unconjugated
Storage:	Store at -20°C as received.
Stability:	Stable for 12 months from date of receipt.
Predicted Protein Size:	21.5 kDa
Gene Name:	calcium and integrin binding 1
Database Link:	NP_006375 Entrez Gene 23991 Mouse Entrez Gene 81823 Rat Entrez Gene 10519 Human Q99828
Synonyms:	CIB; CIBP; KIP1; PRKDCIP; SIP2-28



[View online »](#)

Product images:


HEK293T cells were transfected with the pCMV6-ENTRY control (Left lane) or pCMV6-ENTRY CIB1 ([RC201591], Right lane) cDNA for 48 hrs and lysed. Equivalent amounts of cell lysates (5 ug per lane) were separated by SDS-PAGE and immunoblotted with anti-CIB1 (1:2000). Positive lysates [LY401918] (100ug) and [LC401918] (20ug) can be purchased separately from OriGene.



Western blot analysis of extracts (35ug) from HT29 cell line by using anti-CIB1 monoclonal antibody (1:500).