

Product datasheet for **TA811148M**

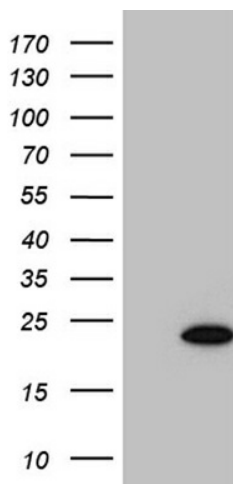
SF3B14 (SF3B6) Mouse Monoclonal Antibody [Clone ID: OTI8A1]

Product data:

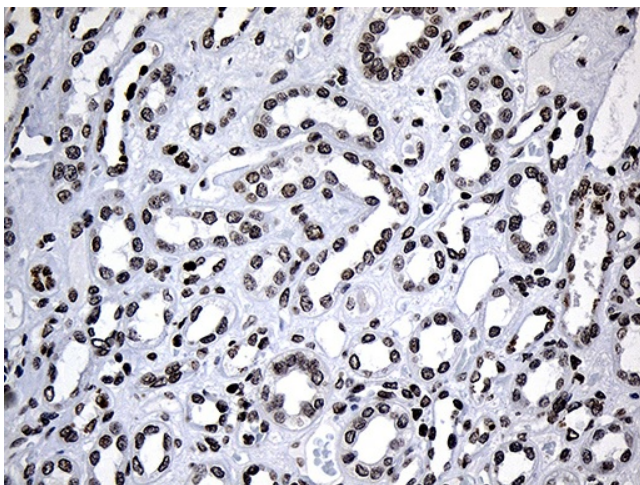
| | |
|-------------------------|--|
| Product Type: | Primary Antibodies |
| Clone Name: | OTI8A1 |
| Applications: | IHC, WB |
| Recommended Dilution: | WB 1:2000, IHC 1:1000 |
| Reactivity: | Human, Mouse, Rat |
| Host: | Mouse |
| Isotype: | IgG2b |
| Clonality: | Monoclonal |
| Immunogen: | Full length human recombinant protein of human SF3B14 (NP_057131) produced in E.coli. |
| Formulation: | PBS (pH 7.3) containing 1% BSA, 50% glycerol and 0.02% sodium azide. |
| Concentration: | 1 mg/ml |
| Purification: | Purified from mouse ascites fluids or tissue culture supernatant by affinity chromatography (protein A/G) |
| Conjugation: | Unconjugated |
| Storage: | Store at -20°C as received. |
| Stability: | Stable for 12 months from date of receipt. |
| Predicted Protein Size: | 14.4 kDa |
| Gene Name: | splicing factor 3b subunit 6 |
| Database Link: | NP_057131 Entrez Gene 66055 Mouse Entrez Gene 100365504 Rat Entrez Gene 51639 Human Q9Y3B4 |
| Synonyms: | CGI-110; HSPC175; Ht006; P14; SAP14; SAP14a; SF3B14; SF3B14a |
| Protein Pathways: | Spliceosome |



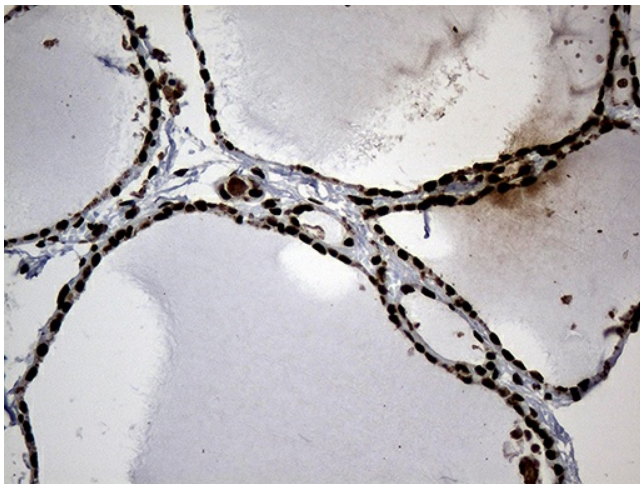
[View online »](#)

Product images:

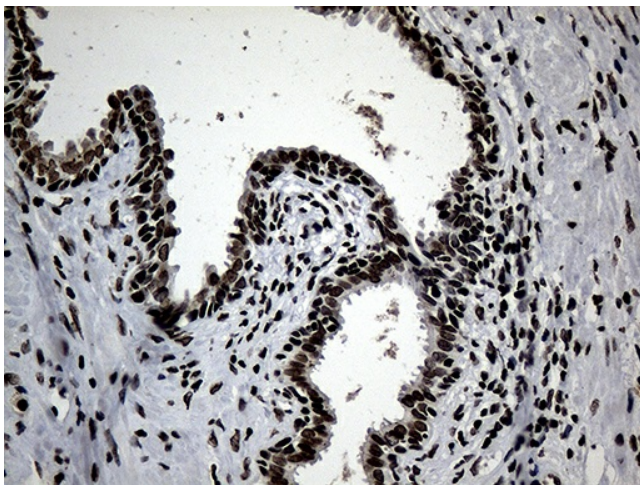
HEK293T cells were transfected with the pCMV6-ENTRY control (Cat# [PS100001], Left lane) or pCMV6-ENTRY SF3B14 (Cat# [RC201866], Right lane) cDNA for 48 hrs and lysed. Equivalent amounts of cell lysates (5 ug per lane) were separated by SDS-PAGE and immunoblotted with anti-SF3B14 (Cat# [TA811148])(1:2000). Positive lysates [LY414228] (100ug) and [LC414228] (20ug) can be purchased separately from OriGene.



Immunohistochemical staining of paraffin-embedded Human Kidney tissue within the normal limits using anti-SF3B14 mouse monoclonal antibody. Heat-induced epitope retrieval by EDTA solution buffer pH 8.0 at 120°C for 3 min.



Immunohistochemical staining of paraffin-embedded Human thyroid tissue within the normal limits using anti-SF3B14 mouse monoclonal antibody. Heat-induced epitope retrieval by EDTA solution buffer pH 8.0 at 120°C for 3 min.



Immunohistochemical staining of paraffin-embedded Human prostate tissue within the normal limits using anti-SF3B14 mouse monoclonal antibody. Heat-induced epitope retrieval by EDTA solution buffer pH 8.0 at 120°C for 3 min.