

## Product datasheet for **TA811146AM**

### MLC1SA (MYL6B) Mouse Monoclonal Antibody (Biotin conjugated) [Clone ID: OTI7F10]

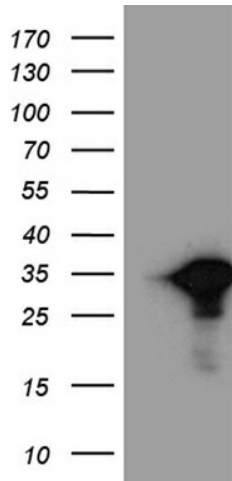
#### Product data:

Product Type:	Primary Antibodies
Clone Name:	OTI7F10
Applications:	WB
Recommended Dilution:	WB 1:500~2000
Reactivity:	Human, Mouse, Rat
Host:	Mouse
Isotype:	IgG2a
Clonality:	Monoclonal
Immunogen:	Full length human recombinant protein of human MYL6B (NP_002466) produced in E.coli.
Formulation:	PBS (pH 7.3) containing 1% BSA, 50% glycerol and 0.02% sodium azide.
Concentration:	0.5 mg/ml
Purification:	Purified from mouse ascites fluids or tissue culture supernatant by affinity chromatography (protein A/G)
Conjugation:	Biotin
Storage:	Store at -20°C as received.
Stability:	Stable for 12 months from date of receipt.
Predicted Protein Size:	22.6 kDa
Gene Name:	myosin light chain 6B
Database Link:	<a href="#">NP_002466</a> <a href="#">Entrez Gene 216459 Mouse</a> <a href="#">Entrez Gene 140465 Human</a> <a href="#">P14649</a>
Synonyms:	MLC1SA
Protein Pathways:	Vascular smooth muscle contraction

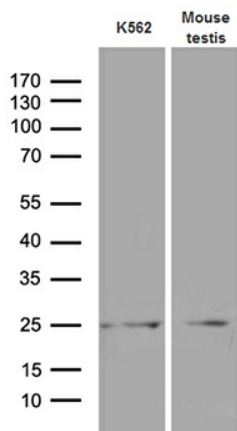


[View online »](#)

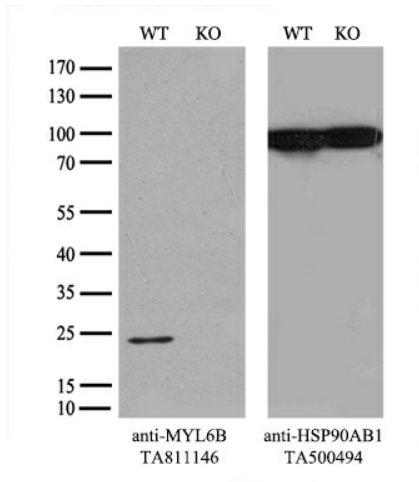
**Product images:**



HEK293T cells were transfected with the pCMV6-ENTRY control (Cat# [PS100001], Left lane) or pCMV6-ENTRY MYL6B (Cat# [RC202076], Right lane) cDNA for 48 hrs and lysed. Equivalent amounts of cell lysates (5 ug per lane) were separated by SDS-PAGE and immunoblotted with anti-MYL6B (Cat# [TA811146])(1:2000). Positive lysates [LY419310] (100ug) and [LC419310] (20ug) can be purchased separately from OriGene.



Western blot analysis of extracts (35ug) from K562 cell line and mouse testis tissue lysate by using anti-MYL6B monoclonal antibody (1:500).



Equivalent amounts of cell lysates (10 ug per lane) of wild-type 293T cells (WT, Cat# LC810293T) and MYL6B-Knockout 293T cells (KO, Cat# [LC812315]) were separated by SDS-PAGE and immunoblotted with anti-MYL6B monoclonal antibody [TA811146], (1:500). Then the blotted membrane was stripped and reprobed with anti-HSP90AB1 antibody ([TA500494]) as a loading control.